

Wad Ben Naga Report V: The Palace of Amanishakhete

Vlastimil Vrtal



NATIONAL
MUSEUM



**NATIONAL
MUSEUM**

Czech Republic | www.nm.cz



Wad Ben Naga Report V: The Palace of Amanishakhete

Vlastimil Vrtal

National Museum
Prague 2024

Front: Queen Amanishakhete offering a beaded necklace; sandstone panelling relief from the Palace of Amanishakhete, fragments SNM 62/10/90d, SNM 62/10/130.

Back: Remains of the Palace of Amanishakhete shortly after its excavation (*left*; © Estate Georg Gerster, Switzerland, www.GeorgeGerster.com) and in 2021 (*right*).

Reviewed by: Angelika Lohwasser | Michael Zach
Scientific Editor: Pavel Onderka

The present work was financially supported by the Ministry of Culture of the Czech Republic (DKRVO 2024–2028/18.II.b, National Museum, 00023272).

Photos & illustrations © Vlastimil Vrtal; Pavel Onderka; Jiří Honzl; Jaana Toivari-Viitala; Alexander Gatzsche; Jiří Vaněk; © National Corporation for Antiquities and Museums and Section française de la direction des antiquités du Soudan (Archive of the Sudanese Expedition at Wad Ben Naga); © Deutsches Archäologisches Institut Berlin, Archiv der Zentrale, Archiv Friedrich W. Hinkel; © Estate Georg Gerster, Switzerland, www.GeorgeGerster.com; © University of Calgary Archives and Special Collections, Peter L. Shinnie fonds
Unless stated otherwise, photos and illustrations are by the present author.

Texts © Vlastimil Vrtal

Layout © AGAMA[®] poly-grafický ateliér, s.r.o., Praha, Czech Republic
Typeset by AGAMA[®] poly-grafický ateliér, s.r.o., Praha, Czech Republic
Cover design © AGAMA[®] poly-grafický ateliér, s.r.o., Praha, Czech Republic

© National Museum, Prague 2024

ISBN 978-80-7036-839-8 (print)
ISBN 978-80-7036-840-4 (pdf)

TABLE OF CONTENTS

1 Introduction	19
1.1 The history of research	19
1.1.1. Early accounts	19
1.1.2 Archaeological research on <i>kom</i> B.	21
1.1.3 Previous studies on the Palace of Amanishakhete	21
1.1.4 Studies on other Meroitic palaces and administrative buildings	23
1.2 Methodology	24
1.2.1 Sources of information.	24
1.2.2 Methodology and data assessment	25
2 Archaeological expedition of the Sudan Antiquities Service, 1958–1960	27
2.1 Archaeological documentation from the 1958–1960 excavations	27
2.1.1 Photographic documentation	27
2.1.1.1 Vercoutter’s preliminary report	27
2.1.1.2 Photographic documentation from the archives of the SFDAS	28
2.1.1.3 Other contemporary accounts	39
2.1.1.3.1 Friedrich W. Hinkel	39
2.1.1.3.2 Peter L. Shinnie	73
2.1.1.3.3 Georg Gerster	80
2.1.1.3.4 William Y. Adams	80
2.1.1.3.5 Ahmed Mohamed Ali Hakem	82
2.1.2 Find entries	83
2.1.3 Object labels.	83
2.1.4 Other documents	83
2.2 Reconstructing the 1958–1960 excavations in the Palace of Amanishakhete	84
2.2.1 First season of excavations, 1958–1959	84
2.2.2 Second season of excavations, 1959–1960	85
2.2.2.1 The progress of excavations in the interior	85
2.2.3 Localisation of finds	88
2.2.3.1 Localisation data from Vercoutter’s preliminary report	88
2.2.3.2 Localisation data from the photographic documentation.	89
2.2.3.3 Localisation data from find entries.	90
2.2.3.4 Designation systems of Vercoutter, Hinkel, and find entries	91
2.2.3.5 Localisation data from object labels and their spatial designation systems.	93
2.2.3.6 Attribution of other finds to the spatial context of the palace	95
3 Survey and excavations by the Archaeological Expedition to Wad Ben Naga	103
3.1 Supplementary works of the 1 st archaeological season of the AE WBN	103
3.2 WBN 154–156	110
3.3 Supplementary works of the 2 nd , 3 rd , and 5 th archaeological seasons of the AE WBN.	112
3.4 WBN 158	112
3.5 Trench T20.	114
3.6 Trench T22.	118
3.7 Supplementary works of the 9 th archaeological season of the AE WBN	124

3.8 Trench T35.....	124
3.9 Supplementary works of the 12 th archaeological season of the AE WBN.....	131
3.10 Supplementary works of the 13 th archaeological season of the AE WBN.....	131
3.11 Trench T55.....	131
3.12 Supplementary works of the 15 th archaeological season of the AE WBN.....	137
3.13 Trench T57.....	138
3.14 Trench T60.....	143
3.15 Supplementary works of the 16 th archaeological season of the AE WBN.....	144
3.16 Trench T63.....	144
3.17 Trench T65.....	147
3.18 Trench T66.....	147
3.19 Supplementary works of the 17 th archaeological season of the AE WBN.....	151
4 Finds	161
4.1 Architectural fragments, appliqués, and wall decoration.....	161
4.1.1 Architectural fragments.....	161
4.1.2 Stucco and sandstone relief decoration.....	162
4.1.3 Relief tiles and architectural appliqués.....	172
4.2 Furniture.....	173
4.3 Statuary.....	174
4.3.1 Lion and falcon statuettes.....	174
4.3.2 Statues of Sebiumeker.....	176
4.3.3 Human statuettes and figures.....	178
4.4 Fragments of inscriptions.....	180
4.5 Vessels.....	182
4.5.1 Stone vessels.....	182
4.5.2 Metal vessels.....	182
4.5.3 Faience vessels.....	184
4.5.4 Glass vessels.....	187
4.6 Tools.....	188
4.6.1 Stone tools.....	188
4.6.2 Metal tools.....	192
4.6.3 Tools of dried clay.....	194
4.6.4 Ceramic tools.....	194
4.6.5 Tools related to textile manufacture.....	195
4.7 Administrative practice.....	198
4.7.1 Sealings.....	198
4.7.2 Signet rings.....	205
4.7.3 Stamps.....	206
4.7.4 Marbles.....	208
4.8 Cultic equipment.....	208
4.8.1 Libation basins.....	208
4.8.2 Offering table stands.....	210
4.8.3 Offering tables.....	211
4.9 Personal adornments.....	211
4.9.1 Amulets, pendants, and beads.....	211
4.9.2 Clasps.....	216
4.9.3 Rings.....	218
4.10 Weapons.....	218
4.11 Raw materials.....	220

4.12 Miscellanea	221
4.12.1 Dice and dice boxes	221
4.12.2 Animal harnesses	222
4.12.3 Basketry	223
4.12.4 Samples	223
4.12.5 Pigments.	223
4.12.6 Modelled rings	224
4.12.7 Reliefs in clay.	224
5 Pottery	225
5.1 Spoil heaps, surface finds, Sudan National Museum.	226
5.1.1 Lids and dishes (form group A)	226
5.1.2 Bowls (form group B).	228
5.1.2.1 Handmade bowls with round base (sub-forms B1a–B1b).	228
5.1.2.2 Wheelmade bowls with round base (form B1)	230
5.1.2.2.1 Wheelmade shallow bowls with round base (sub-form B1a)	232
5.1.2.2.2 Wheelmade deep hemispherical bowls with round base (sub-form B1b1)	232
5.1.2.2.3 Deep conical bowls with round base (sub-form B1b2).	234
5.1.2.3 Bowls with flat or ring base (form B2)	234
5.1.2.3.1 Open bowls with flat or ring base and ledge rim (sub-form B2b)	236
5.1.2.3.2 Deep bowls with flat or solid ring base and ledge rim (sub-form B2c)	236
5.1.2.3.3 Deep bowls with flat or solid ring base and narrowing rim (sub-form B2d)	237
5.1.2.4 Bowls with round base, carinated body, and modelled collar rim (sub-form B3b).	238
5.1.2.5 Vats (form B4).	238
5.1.2.6 Bowls with pointed base and modelled inverted rim (form B5)	240
5.1.3 Cups (form group C)	240
5.1.3.1 Miniature cups (form C1).	240
5.1.3.2 Hemispherical cups (form C2)	240
5.1.3.3 Tall cups (form C3)	242
5.1.3.4 Cylindrical cups (form C4).	242
5.1.3.5 Lotiform cups with flat base (sub-form C5b) and conical cups (form C6)	242
5.1.3.6 Carinated cups (form C7).	243
5.1.4 Feeder cups (form group E)	243
5.1.5 Amphorae (form group F).	244
5.1.6 Jars (form group J)	248
5.1.6.1 Cylindrical and ovoid jars with short conical neck (forms J1 and J2)	248
5.1.6.2 Ovoid jars with short cylindrical neck (form J4).	251
5.1.6.3 Ovoid jars with narrowing neck (form J6).	251
5.1.6.4 Ovoid jars with short neck and flaring or modelled collar rim (form J7).	251
5.1.6.5 Neckless jars (form J9)	251
5.1.6.6 Spherical jars with narrowing neck (form J10)	252
5.1.6.7 Jars with tall modelled neck (form J13)	257
5.1.6.8 Jars with short narrowing modelled neck (form J14).	257
5.1.6.9 Jars with vertical handles, ring base, and flaring rim (form J15)	257
5.1.6.10 Jars with wide neck and vertical handles (“kraters”) (form J16)	257
5.1.6.11 Jars with wide collar neck and carinated shoulder (form J17)	258
5.1.7 Lamps (form group L)	260
5.1.8 Miscellanea (form group M)	261
5.1.8.1 Tubular stands (form M1)	261
5.1.8.2 Tall tubular stands with container (sub-form M2b)	261

5.1.8.3 Biconical stands/braziers (forms M3 and M6)	261
5.1.8.4 Stemmed offering stands ("candlesticks") (form M4)	263
5.1.8.5 Open conical vessels (sub-form M8a) and small-sized conical vessels (sub-form M8c)	263
5.1.8.6 Stemmed chalice-like censers (form M9)	265
5.1.8.7 Vase-like vessels (form M10)	265
5.1.9 Tubular strainers ("klepsydrae") (form group Q)	265
5.1.10 Bottles, jugs, and containers (form group S)	266
5.1.10.1 Pear-shaped bottles with narrow neck and flaring rim (form S1)	266
5.1.10.2 Tall conical and cylindrical bottles and jugs with flat and solid flaring base (forms S3 and S4)	267
5.1.10.3 Aquamaniles (form S5)	267
5.1.10.4 Inkwells (form S7)	267
5.1.10.5 Spherical containers (form S8)	269
5.1.10.6 Jugs with vertical handle (sub-forms S9a and S9b)	269
5.1.10.7 Spherical jugs with tall narrow neck (form S10)	269
5.1.11 Unguentaria (form group U)	270
5.1.12 Undeterminable fragments	270
5.2 Strata preceding the construction of structure WBN 100	271
5.3 Strata preceding the construction of walls WBN 171–172	271
5.4 Strata preceding the main destruction of structure WBN 100, interior	273
5.5 Strata following the main destruction of structure WBN 100, interior	274
5.6 Strata in the immediate exterior of structure WBN 100	276
5.7 Strata in the immediate exterior of structure WBN 100 preceding the main destruction	279
5.8 Strata attributed to squatting activities in the immediate exterior of structure WBN 100	281
5.9 Quantification and discussion	298
5.9.1 Quantification and discussion of wares and fabrics	298
5.9.2 Quantification and discussion of forms	301
6 Architectural form of the palace	311
6.1 State of research	311
6.2 Analysis and discussion	312
6.2.1 Construction technology	312
6.2.2 Exterior wall	315
6.2.3 Floor levels, casemates, and ceilings	321
6.2.4 Ramps and staircases	328
6.2.5 Courtyards, peristyle courts, and lightwells	332
6.2.6 Columns	334
6.2.7 Architectural traces of functional units	338
6.2.8 Alterations to Hinkel's plan	340
7 Chronological setting of the construction of the palace, its period of operation, and destruction	343
7.1 State of research	343
7.2 Analysis and discussion	344
7.2.1 Construction of the palace	344
7.2.2 Construction of walls WBN 171 and WBN 172	345
7.2.3 Operation and squatting activities	347
7.2.4 Destruction	349
8 Functions of the palace and its spatial context	351
8.1 State of research	351
8.2 Analysis and discussion	356
8.2.1 Assessment of data and the case of rooms WBN 104 and WBN 135	356

8.2.2 Approaching the administrative function: sealings, signet rings, stamps, inkwell, ostraca, and storage jars.	359
8.2.3 Approaching the ceremonial and residential function: relief decoration.	363
8.2.4 Other primary and secondary functions.	365
9 The Palace of Amanishakhete and the site of Wad Ben Naga	369
9.1 State of research	369
9.2 Wad Ben Naga and the Meroitic kingdom in the time of Amanishakhete	369
10 Summary	373
Appendix: Catalogue of recorded finds from the Sudanese excavations in the Palace of Amanishakhete	379
Bibliography	501
Abstract	519

LIST OF FIGURES

Fig. 1.1	Plan of the site of Wad Ben Naga published by Cailliaud in 1823, showing <i>kom</i> B covering the remains of the Palace of Amanishakhete and the same area on the plan of the site by Hoskins with the approximate position of <i>kom</i> B.	20
Fig. 1.2	The site of Wad Ben Naga in the present state of research with the Palace of Amanishakhete (WBN 100) in the centre.	20
Fig. 1.3	The Palace of Amanishakhete on an aerial photograph published by Georg Gerster in 1964, four years after the termination of the first excavations.	22
Fig. 1.4	The Palace of Amanishakhete on an aerial photograph (cropped) captured by Friedrich W. Hinkel in 1999.	24
Fig. 1.5	The remains of the Palace of Amanishakhete as seen from the northern and southern spoil heaps.	25
Fig. 1.6	Elevation model of the remains of the Palace of Amanishakhete in the current state of preservation; isohypses at the interval of 0.1 m.	26
Fig. 1.7	Aerial view of the remains of the Palace of Amanishakhete in the current state of preservation ..	26
	Images by the expedition of the Sudan Antiquities Service.	40–68
	Images by Friedrich W. Hinkel, 1960–1962, 1966, 1968–1969.	74–79
	Images by Peter L. Shinnie, 1960, 1964.	81
Fig. 2.1	Reconstructed locations of archaeological features based on the photographic documentation, post-excavation accounts, find entries, and survey of the remains of the structure by the Archaeological Expedition to Wad Ben Naga.	82
Fig. 2.2	Reconstructed progress of excavations in the course of the second season.	86
Fig. 2.3	Plan of the Palace of Amanishakhete published by Vercoutter, employing alphabetical designation system for rooms, and a copy (?) of an early plan of the same structure preserved in the Hinkel Archive, employing combination of numerical and alphabetical systems.	92
Fig. 2.4	Localisation of finds based on all sources of information.	95
Fig. 3.1	Distribution of areas excavated and reexcavated by the AE WBN in the Palace of Amanishakhete.	103
Fig. 3.2	Sandstone architectural elements, Group VIII.	104
Fig. 3.3	Sandstone architectural elements, Group X.	105
Fig. 3.4	Sandstone architectural elements, Group XI.	106
Fig. 3.5	Sandstone architectural elements, Group XII.	107
Fig. 3.6	Sandstone architectural elements, Group XIII.	107
Fig. 3.7	Sandstone architectural elements, Group XIV.	108
Fig. 3.8	Sandstone architectural elements, Group XVI.	108
Fig. 3.9	Distribution of redeposited sandstone architectural elements.	109
Fig. 3.10	Room WBN 154, top plan.	111
Fig. 3.11	Orthophoto of room WBN 158 after reexcavation; top plan.	113
Fig. 3.12	Section through the base of the central column in room WBN 158.	114
Fig. 3.13	Trench T20; top plan.	116
Fig. 3.14	Cavetto cornice bricks from trenches T20 and T22.	116
Fig. 3.15	Trench T20, FEA 150.	117
Fig. 3.16	Trench T20; sections.	117
Fig. 3.17	Trench T22; top plan.	119
Fig. 3.18	Trench T22; section west and north through the baulk.	120

Fig. 3.19	Trench T22; top plan showing the baulk after the removal of stratum FEA 159.	121
Fig. 3.20	Trench T22; foundations of mudbrick walls FEAs 157–158 in the south-western corner of room WBN 121.....	121
Fig. 3.21	Trench T22; section north through the baulk and section east.	123
Fig. 3.22	Entrances to rooms WBN 129 and WBN 130; top plan and sections.	125
Fig. 3.23	Trench T35; top plan after cleaning strata FEAs 101, 173 and after removing consecutive layers of stratum FEA 172.....	127
Fig. 3.24	Baulk in trench T35; section.	128
Fig. 3.25	Trench T35; top plan at the end of excavations, section south and the walls of room WBN 119.	129
Fig. 3.26	Trench T35; section north-east and foundations of wall FEA 176/179 in room WBN 120.	130
Fig. 3.27	Trench T55; top plan and sections south and north.	132
Fig. 3.28	Trench T55; top plan showing positions of special brick types and plaster modulations..	134
Fig. 3.29	Trench T55; top plan showing the position of wall decoration in blue, red, and yellow paint. .	135
Fig. 3.30	Selected bricks, brick fragments, and lime plaster fragments from the destruction of the exterior wall in trench T55.....	136
Fig. 3.31	Trench T57; top plan.	139
Fig. 3.32	Trench T57; sections.....	140
Fig. 3.33	Cavetto cornice brick fragments and one of the fillet bricks from trench T57.	141
Fig. 3.34	Trench T60; top plan and section through vessel emplacement FEA 201b.	143
Fig. 3.35	Trench T63; top plan and sections.	146
Fig. 3.36	Trench T65; top plan and sections.	146
Fig. 3.37	Trench T66; top plan and sections.	150
Fig. 3.38	The eastern exterior wall as excavated in the course of the 15 th and 17 th excavation seasons; top plan and the face of the wall in the area of the south-eastern corner.	152
Fig. 3.39	Reconstructed stratigraphic relations in trenches T20, T22, T35, T55, T60, T63, T65, and T66... ..	154
Fig. 3.40	Campaniform column capitals XIII.4 and XIII.10 redeposited in Group XIII to the west of the structure.	155
Fig. 3.41	Rectangular blocks with semi-cylindrical cuts XII.1 and XII.19, the function of which is unclear, redeposited in Group XII to the west of the structure.	155
Fig. 3.42	Room WBN 154; view to the south.	155
Fig. 3.43	Entrance to room WBN 157; view to the north-west.	155
Fig. 3.44	Room WBN 158; view to the north-west.	155
Fig. 3.45	Entrance to room WBN 158.	155
Fig. 3.46	Entrance between rooms WBN 158 and WBN 160; view to the north-east.....	156
Fig. 3.47	Trench T20, view to the east.	156
Fig. 3.48	Trench T20, section through wall WBN 171; view to the north-west.....	156
Fig. 3.49	Trench T22, cross-view section through the baulk in room WBN 121; view to the north.....	156
Fig. 3.50	Trench T22, consecutive layers of sandstone debris and fired brick fragments in the baulk in room WBN 121.....	156
Fig. 3.51	Trench T22, compartments elevating the floor in room WBN 121; view to the north.	156
Fig. 3.52	Trench T35, section through the baulk in room WBN 119; view to the north-west.	157
Fig. 3.53	Trench T35, room WBN 119 and the remains of the baulk; view to the north.	157
Fig. 3.54	Trench T35, section through the fill elevating the floor in room WBN 120; view to the east. ...	157
Fig. 3.55	Trench T55, destruction of the exterior wall before clearing; view to the north-east.....	157
Fig. 3.56	Trench T55, destruction of the exterior wall before clearing; view to the west.	157
Fig. 3.57	Trench T55, bricks 432–434 in the destruction of the exterior wall marking the position of a shallow recess; view to the north-east.....	157
Fig. 3.58	Trench T55 after clearing the destruction of the exterior wall and underlying stratum FEA 185, view to the north-east.	158
Fig. 3.59	Eastern face of the eastern exterior wall; view to the west.	158

Fig. 3.60	Pillars in the western part of ramp WBN 161–162 abutting the eastern exterior wall; view to the south-west.	158
Fig. 3.61	Trench T57, debris of fired brick fragments, disintegrated lime plaster, and pottery illustrating the appearance of the surface of <i>kom</i> B previous to excavations; view to the south.	158
Fig. 3.62	Trench T57, the baulk in room WBN 118b; view to the north-east.	158
Fig. 3.63	Trench T57, cross-view section through the baulk in room WBN 118b; view to the north-east..	158
Fig. 3.64	Trench T57, section through the baulk in room WBN 118b and the test pit through the fill elevating the floor in the same room; view to the south-east.	159
Fig. 3.65	Trench T57, sections of fired brick brickwork overlying system of mudbrick walls between rooms WBN 118b and WBN 128; view to the north-west.	159
Fig. 3.66	Trench T60; view to the north.	159
Fig. 3.67	Trench T63; view to the east.	159
Fig. 3.68	Trench T63; view to the north-west.	159
Fig. 3.69	Trench T66; view to the south-west.	159
Fig. 3.70	Trench T66, vessel emplacements by stone wall WBN 172; view to the south.	160
Fig. 3.71	Trench T66, the south-western corner of the palace; view to the north.	160
Fig. 3.72	Trench T66, western section of the trench showing the evidence of economic activities in the form of several circular shallow pits and a refuse pit; view to the north-west.	160
Fig. 3.73	Eastern face of the eastern exterior wall; view to the north.	160
Fig. 3.74	Remains of the southern wing of the decorative frame with a double torus moulding and a buttress, preserving <i>in situ</i> the painted decoration in red between the tori; view to the north-west.	160
Fig. 3.75	The south-eastern corner of the palace.	160
Fig. 4.1	Hathor (?)-headed and lion gargoyles.	162
Fig. 4.2	Tiles and wooden boards.	163
Fig. 4.3	Reconstructed larger-than-life-size depiction of a female royal figure.	164
Fig. 4.4	Reconstructed depiction of a female deity.	165
Fig. 4.5	Reconstructed depiction of the Souls of Pe and Nekhen.	165
Fig. 4.6	Reconstructed depiction of an offering female royal figure.	167
Fig. 4.7	Stucco fragment SNM 11971 depicting a bracer of a royal figure.	168
Fig. 4.8	Sandstone relief fragments.	169
Fig. 4.9	Stucco relief fragments and appliqués.	170
Fig. 4.10	Stucco relief fragments.	171
Fig. 4.11	Relief tiles and architectural appliqués.	173
Fig. 4.12	Fragments of furniture.	174
Fig. 4.13	Lion statuettes.	175
Fig. 4.14	Fragment of a falcon statuette.	176
Fig. 4.15	Statues of Sebiuameker.	178
Fig. 4.16	Human statuettes and figures.	180
Fig. 4.17	Fragments of inscriptions.	181
Fig. 4.18	Stone and metal vessels.	183
Fig. 4.19	Imported metal vessels and their fragments.	184
Fig. 4.20	Faience vessels and their fragments.	186
Fig. 4.21	Fragments of glass vessels.	187
Fig. 4.22	Stone pounders.	188
Fig. 4.23	Handstones.	190
Fig. 4.24	Handstones and bedstones.	191
Fig. 4.25	Stone palettes and a pulley (?).	192
Fig. 4.26	Metal tools.	194

Fig. 4.27	Tools of dried clay and ceramic tools.	195
Fig. 4.28	Loom weights and other weights.	196
Fig. 4.29	Spindle whorls.	197
Fig. 4.30	Collection of door sealings SNM 62/10/102a–k.	199
Fig. 4.31	Door sealings and possible container sealings.	201
Fig. 4.32	Jar sealings.	203
Fig. 4.33	A note with depictions of seal images on signet rings from the Palace of Amanishakhete.	205
Fig. 4.34	Signet rings.	206
Fig. 4.35	Stamps.	208
Fig. 4.36	Marbles.	208
Fig. 4.37	Libation basins.	210
Fig. 4.38	Offering table stands.	211
Fig. 4.39	Offering table.	211
Fig. 4.40	Amulets and pendants.	213
Fig. 4.41	Beads and pendants.	215
Fig. 4.42	Clasps.	217
Fig. 4.43	Plain rings.	218
Fig. 4.44	Weapons.	219
Fig. 4.45	Ivory.	220
Fig. 4.46	Dice and dice box.	222
Fig. 4.47	Animal harnesses.	223
Fig. 4.48	Basketry handle.	223
Fig. 4.49	Mother-of-pearl shell with red pigment stains.	224
Fig. 4.50	Modelled ring.	224
Fig. 4.51	Reliefs in clay.	224
Fig. 5.1	Lids and dishes (forms A1–A10).	227
Fig. 5.2	Shallow handmade bowls with round base (sub-form B1a).	229
Fig. 5.3	Deep handmade bowls with round base (sub-form B1b).	230
Fig. 5.4	Shallow wheelmade bowls with round base (sub-form B1a).	231
Fig. 5.5	Wheelmade deep hemispherical and conical bowls with round base (sub-forms B1b1, B1b2). ..	233
Fig. 5.6	Open bowls with flat or ring base and ledge rim (sub-form B2b) and deep bowls with flat or solid ring base and ledge rim (sub-form B2c).	235
Fig. 5.7	Deep bowls with flat or solid ring base and narrowing rim (sub-form B2d).	237
Fig. 5.8	Bowls with round base, carinated body, and modelled collar rim (sub-form B3b).	238
Fig. 5.9	Vats (sub-forms B4a–c) and bowls with pointed base and modelled inverted rim (form B5). ..	239
Fig. 5.10	Hemispherical cups (form C2) and tall cups (form C3).	241
Fig. 5.11	Cylindrical cups (form C4), lotiform cups with flat base (sub-form C5b), conical cups (form C6), carinated cups (form C7), and undeterminable fragments of cups.	243
Fig. 5.12	Feeder cups (form group E).	244
Fig. 5.13	Amphorae (form group F).	245
Fig. 5.14	Sherds of imported vessels included in the pottery sample from the westernmost part of the southern spoil heap.	246
Fig. 5.15	Thin sections of samples P11/2018 and SM13/103 in cross-polarized light and before and after refiring at 1200°.	247
Fig. 5.16	Cylindrical and ovoid jars with short conical neck (forms J1 and J2).	249
Fig. 5.17	Ovoid jars with short cylindrical neck (form J4), ovoid jars with narrowing neck (form J6), ovoid jars with short neck and flaring or modelled collar rim (form J7), and neckless jars (form J9).	250
Fig. 5.18	Spherical jars with narrowing neck and plain rim (sub-form J10a) from room WBN 108 (?). ..	253

Fig. 5.19	Spherical jars with narrowing neck and plain rim (sub-form J10a).	254
Fig. 5.20	Spherical jars with narrowing neck and plain rim (sub-form J10a).	255
Fig. 5.21	Spherical jars with narrowing neck (form J10), jars with tall modelled neck (form J13), jars with short narrowing modelled neck (form J14), jars with wide neck and vertical handles ("kraters") (form J16), and jars with wide collar neck and carinated shoulders (form J17).	258
Fig. 5.22	Jars (form group J) and fragments of jars with pot-marks.	259
Fig. 5.23	Lamps (form group L).	260
Fig. 5.24	Tubular stands (form M1), tall tubular stands with container (sub-form M2b), and biconical stands/braziers (forms M3 and M6).	262
Fig. 5.25	Stemmed offering stands ("candlesticks") (form M4), open and small-sized conical vessels (sub-forms M8a and M8c), and stemmed chalice-like censers (form M9).	264
Fig. 5.26	Vase-like vessels (form M10) and strainers ("klepsydrae") (form group Q).	266
Fig. 5.27	Bottles, jugs, and containers (form group S), and unguentaria (form group U).	268
Fig. 5.28	Undeterminable fragments.	270
Fig. 5.29	Pottery from strata preceding the construction of structure WBN 100.	272
Fig. 5.30	Pottery from strata preceding the construction of structure WBN 100.	273
Fig. 5.31	Pottery from strata preceding the construction of wall WBN 171.	273
Fig. 5.32	Pottery from strata preceding the main destruction of structure WBN 100, interior.	274
Fig. 5.33	Pottery from strata following the main destruction of structure WBN 100, interior.	275
Fig. 5.34	Pottery from strata following the main destruction of structure WBN 100, interior.	276
Fig. 5.35	Pottery from strata in the immediate exterior of structure WBN 100.	277
Fig. 5.36	Pottery from strata in the immediate exterior of structure WBN 100.	278
Fig. 5.37	Pottery from strata in the immediate exterior of structure WBN 100 preceding the main destruction.	280
Fig. 5.38	Pottery from strata in the immediate exterior of structure WBN 100 attributed to squatting activities.	282
Fig. 5.39	Pottery from strata in the immediate exterior of structure WBN 100 attributed to squatting activities.	283
Fig. 5.40	Pottery from refuse pit FEA 233.	285
Fig. 5.41	Pottery from refuse pit FEA 233.	286
Fig. 5.42	Selected pieces of pottery.	309
Fig. 5.43	Selected pieces of pottery.	310
Fig. 6.1	Cavetto cornice type fired brick, trench T55, brick 783; worn narrow fired brick with a rounded short side lying above a fragment of a sandstone column drum, room WBN 109; brick with a small recess, trench T55, brick 435.	313
Fig. 6.2	Change of mudbrick type in walls WBN 118a/121, WBN 120/122, and WBN 118b/129.	314
Fig. 6.3	Hypothetical reconstruction of the appearance and polychrome decoration of the top of the exterior wall based on plastered bricks with remains of painted decoration retrieved from trench T55.	317
Fig. 6.4	Lintel with cavetto cornice XIII.21 and fragment of a moulding XII.6 redeposited among stone architectural elements to the west of the palace.	318
Fig. 6.5	Reconstruction of the polychrome decoration on the torus mouldings and buttresses in the eastern exterior wall.	318
Fig. 6.6	Stones X.38–40 forming a lintel decorated with the frieze of uraei.	319
Fig. 6.7	Floor levels in the Palace of Amanishakhete established based on stratigraphy and change of mudbrick type.	322
Fig. 6.8	Detailed views on sections through baulks in rooms WBN 121 and WBN 119.	325
Fig. 6.9	Ramp WBN 167W with the plain slanting surface of the causeway preserved; view from the north-west.	329

Fig. 6.10	Remains of a linear feature in room WBN 160, viewed from the north, and a staircase in room WBN 147, viewed from the north-east.....	330
Fig. 6.11	Hypothetical reconstruction of column types 1–3 from structure WBN 100.	336
Fig. 6.12	Fired bricks designated for use in columns found in room WBN 160.....	338
Fig. 6.13	Hypothetical reconstruction of the Palace of Amanishakhete; view from the west.	341
Fig. 6.14	Hypothetical reconstruction of the Palace of Amanishakhete; view from the north.....	341
Fig. 7.1	Calibrated radiocarbon dating of samples from the Palace of Amanishakhete retrieved by the AE WBN.	346

LIST OF TABLES

Table 2.1	Find spots and dates of retrieval of artefacts based on find entries, object labels, Vercoutter's report, and the photographic documentation.	97–102
Table 3.1	Sandstone architectural elements in Group VIII (east).	104
Table 3.2	Sandstone architectural elements in Group X (south).	105
Table 3.3	Sandstone architectural elements in Group XI (west).	105
Table 3.4	Sandstone architectural elements in Group XII (west).	106
Table 3.5	Sandstone architectural elements in Group XIII (west).	106
Table 3.6	Sandstone architectural elements in Group XIV (north).	107
Table 3.7	Sandstone architectural elements in Group XVI (east).	108
Table 3.8	Dimensions of preserved parts of columns in room WBN 154.	111
Table 5.1	Attribution of strata containing pottery finds to interpretative units.	226
Table 5.2	Selection of diagnostic sherds (study material group) from the pottery assemblage retrieved in the course of excavations and reexcavations from the spatial context of structure WBN 100 by the AE WBN.	287–298
Table 5.3	Quantification of wares according to sherd count.	299
Table 5.4	Quantification of wares according to weight.	300
Table 5.5	Quantification of forms according to weight.	303–304
Table 5.6	Quantification of forms according to estimated vessel equivalents (EVEs).	305–306
Table 5.7	Quantification of forms according to estimated vessel equivalents (EVEs); comparison of pottery corpora from structures WBN 100, WBN 200, and WBN 700 at Wad Ben Naga.	307

ACKNOWLEDGEMENTS

The present work was financially supported by the Ministry of Culture of the Czech Republic (DKRVO 2024–2028/18.II.b).

The present volume is based on a doctoral dissertation submitted by the present author in 2021 at the University of Vienna. The present author wishes to thank Michael H. Zach and Christiana E. Köhler for supervising the doctoral project and for their numerous suggestions, comments, and recommendations. Special thanks go to Michael H. Zach for his initial ideas concerning the doctoral project, as well as for his constant readiness in sharing his extensive private library on Meroitic Nubia.

The present author wishes to extend his gratitude to Pavel Onderka, the head of the Archaeological Expedition to Wad Ben Naga of the National Museum, Czech Republic, and the scientific editor of the present volume for introducing him to the field of Meroitic studies and to the great people of Sudan, and later, for providing him with the opportunity to assess the rich archaeological record on the Palace of Amanishakhete at Wad Ben Naga. Specifically, the present author is thankful for being able to work on the archaeological material from the palace, for having the access to the previous field documentation, and for the possibility to conduct excavations and reexcavations in the structure and on the spoil heaps from the 1958–1960 excavations.

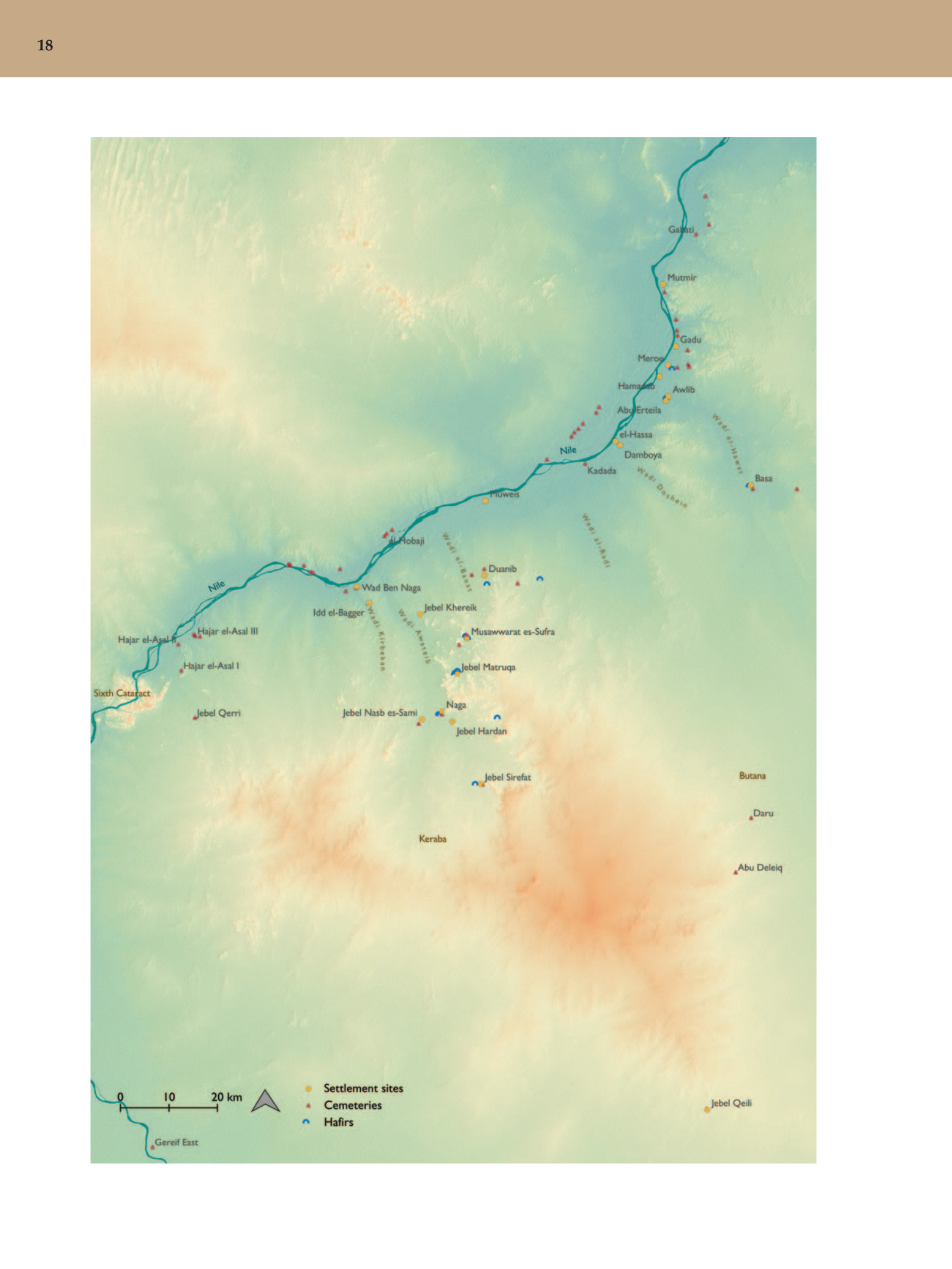
The present author would also wish to thank other past and present members of the Archaeological Expedition to Wad Ben Naga for their contributions to the study of the palace, namely to Miroslav Vaškový, Jitka Barochová, Samuel Rihák, Jaana Toivari-Viitala, Alexander Gatzsche, Jiří Honzl, František Vacek, Peter Pavúk, and especially to Juweriya Osman Mohamed Zain, our dear inspector of the National Corporation for Antiquities and Museums. In particular, the present author is grateful to Pavel Onderka, Juweriya Osman Mohamed Zain, Jiří Honzl, and Alexander Gatzsche for their help with documenting the artefacts kept in the Sudan National Museum, and to Jiří Honzl for our many discussions on Meroitic pottery. The present author also thanks to all who provided financial support to the archaeological mission in the past, the Czech Science Foundation, the Ministry of Culture of the Czech Republic, and Mr. and Mrs. Karáskovi, and to friends of the expedition in Sudan, namely Nasreldin Shulgami, the Honorary Consul-General of the Slovak Republic in Sudan, Khalil Hassan Ibrahim, and their families. Finally, thanks go also to all the Sudanese workmen from Wad Ben Naga who participated on the excavations.

The present author is most grateful to the National Corporation for Antiquities and Museums for the opportunity to work at the site and for the possibility to study the artefacts and ecofacts from the 1958–1960 excavations in the Palace of Amanishakhete kept in the collections of Sudan National Museum; namely to Ghalia Garelnabi Abdelrahman Babiker, the general director, Hassan Hussein Idris, Abdel-Rahman Ali Mohamed, and Hatem Elnour Mohamed, the general directors emeriti, to Juweriya Osman Mohamed Zain, to Ikhlass Abdllatief Ahmed Idriss, to Iglal Elmalik, to Sarah Abdolattif Elsheekh Mohammed Elbasheer, as well as to other present and former members of the National Corporation for Antiquities and Museums. Thanks go also to their colleagues from the Sheikan Museum at el-Obeid for their help with documentation of artefacts from Wad Ben Naga kept in the museum's collection.

The present author is also thankful to Vincent Francigny, the former head of the Section française de la direction des antiquités du Soudan, for the access to the archival material from the 1958–1960 excavations, namely parts of the field documentation. Additional archival materials were kindly provided for study by Martina Düntzer and Sabine Thänert of the Archiv der Zentrale of the Deutsches Archäologisches Institut, in which the archive of Friedrich W. Hinkel is kept, by Ama Shinnie and Curtis Frederick, in charge of Peter L. Shinnie's fonds kept by the University of Calgary Archives and Special Collections, by Laetitia Bossart of the Service commun de documentation, Université de Lille, keeper of Jean Vercoutter's fonds, and by Cornelia Kleinitz, with whom field diaries of the 1960 Musawwarat es Sufra Expedition were consulted.

Last but not least, the present author wishes to express his warmest thanks to his family and friends for their long-lasting support and encouragement, without which this publication could not be accomplished.

The present volume is dedicated to the people of Sudan affected by the current frightful conflict in the country.



1 INTRODUCTION

The so-called Palace of Amanishakhete (structure WBN 100) at the archaeological site of Wad Ben Naga, in the present-day Republic of Sudan, is the best-preserved palatial structure of the Meroitic kingdom unearthed up to date. With its dimensions of more than 3700 sq. m, it also ranks among the largest examples of palatial architecture of ancient Nubia. The remains of the palace thus represent an important source of data with the potential of casting light on many aspects of Meroitic architecture, administration, economy, society, and material culture.

The palace was built presumably around the Turn of the Eras (second half of the 1st cent. BCE – first half of the 1st cent. CE)¹ at the site of Wad Ben Naga in the present-day River Nile State, Sudan. At that time, Wad Ben Naga was the southernmost large settlement (often termed “royal city” in literature)² on the banks of the River Nile. Considerable population probably existed at Wad Ben Naga already at latest in the 3rd century BCE, provided that the identification of the site with the toponym *irbikrwb*³ and Arabam (mentioned by Bion of Soloi)⁴ is correct. While monumental structures recently unearthed in the western part of the site can be dated to an earlier period based on archaeological finds,⁵ the Palace of Amanishakhete and the so-called Eastern Temple (WBN 500) provided the so far earliest epigraphic evidence for the site, through the finds of objects bearing the name of Queen Amanishakhete/Amanishakheto.⁶ The heyday of the building activity at

the site falls to the reigns of King Natakamani and *kandake* Amanitore, who built several temples at the site a few decades later. Even then, however, the palace likely maintained its importance at the site through the effects that its monumental size and orientation of its entranceways had on local topography, if not directly through retaining its original functions. Still later, the palace went through a process of gradual decay and became host of various secondary activities and subject to transformations.

1.1 The history of research

1.1.1 Early accounts

The remains of the palace were for the first time recorded by Louis M. A. Linant de Bellefonds on 30 November 1821.⁷ During another visit to the site on 13 January the following year, he produced a fine sketch capturing the western part of the site, which included in the background also part of the *kom* covering the remains of the palace.⁸

In 1821, specifically on 17 May,⁹ Frédéric Cailliaud also passed through the site, only to return – similarly to Linant de Bellefonds – shortly after the visit of the latter, in March of the following year. In his report on the second visit to the site,¹⁰ Cailliaud mentioned several *koms* with fragments of architectural elements. Among these was also the *kom* with the remains of the palace, which he labelled *kom* B. Based on the elements of architecture, he considered the *kom* to cover the remains of a temple. With his colleague and companion Pierre Constant Lortzecz, they created a relatively detailed plan of the site with the area of the *kom* clearly indicated (fig. 1.1, *left*). Another, considerably less precise plan capturing the *kom* was put together by George Alexander Hoskins over a decade after Cailliaud’s visit, in 1833 (fig. 1.1, *right*).¹¹ In the course of the 19th century, Wad Ben Naga was visited by a number of travellers interested in ancient

1 Vercoutter 1962. For the discussion see chapter 7.2.1.

2 See *inter alia* Kröper *et al.* 2011; Maillot 2015a.

3 Var. *irbikrb*; Hintze, F. 1962a: 25; Hintze, F. *et al.* 1993: 79, 86.

4 Possibly an accusative; Priese 1984a; FHN II: 554.

5 *Preliminary Report* 10; *Preliminary Report* 11; *Wad Ben Naga Report* I: 23; Honzl – Vrtal 2024.

6 Vercoutter 1962: 282–283, fig. 12; REM 1055; *Preliminary Report* 10; *Wad Ben Naga Report* II: 47, figs. 4.23, 4.25a–b. Both variants of the name of the queen are attested, at least in the Meroitic hieroglyphic script: The variant Amanishakheto is attested in both cursive script and hieroglyphs on blocks from Qasr Ibrim (REM 1141), on the so-called “Obelisk of Meroe” (REM 0047, 1041, 1254), on the pylon in front of her offering chapel at Begrawiya (REM 0056), on a stela from the Eastern Temple at Wad Ben Naga (*Preliminary Report* 10; *Wad Ben Naga Report* II: 47, figs. 4.23, 4.25a–b), and on Stela I from Naga (REM 1294). The variant Amanishakhete is attested in Meroitic hieroglyphs on blocks from Temple T at Kawa (REM 0705), on a plaster from temple M 250 at Meroe (REM 1346), on Stela II from Naga (REM 1293), and on two fragments of stucco relief decoration from the Palace of Amanishakhete at Wad Ben Naga (Vercoutter 1962: fig. 12; see chapter 4.1.2, figs. 4.5, 4.10, SNM 11970, SNM 62/10/128a). With respect to the employment of the variant Amanishakhete on the two fragments from the palace at Wad Ben Naga, this variant is preferred in the present volume.

7 Linant de Bellefonds MSS 264, 2, fol. 44; Rondot *et al.* 2021: 290.

8 *Wad Ben Naga Report* I: pls. 2–3, *very left*; Rondot *et al.* 2021: ill. 181, *very left*.

9 Cailliaud 1826: II, 184.

10 Cailliaud 1823: I, pl. IX; Cailliaud 1826: III, 101.

11 Hoskins 1835: 114; Hoskins MSS 2.69, Griffith Institute, University of Oxford.

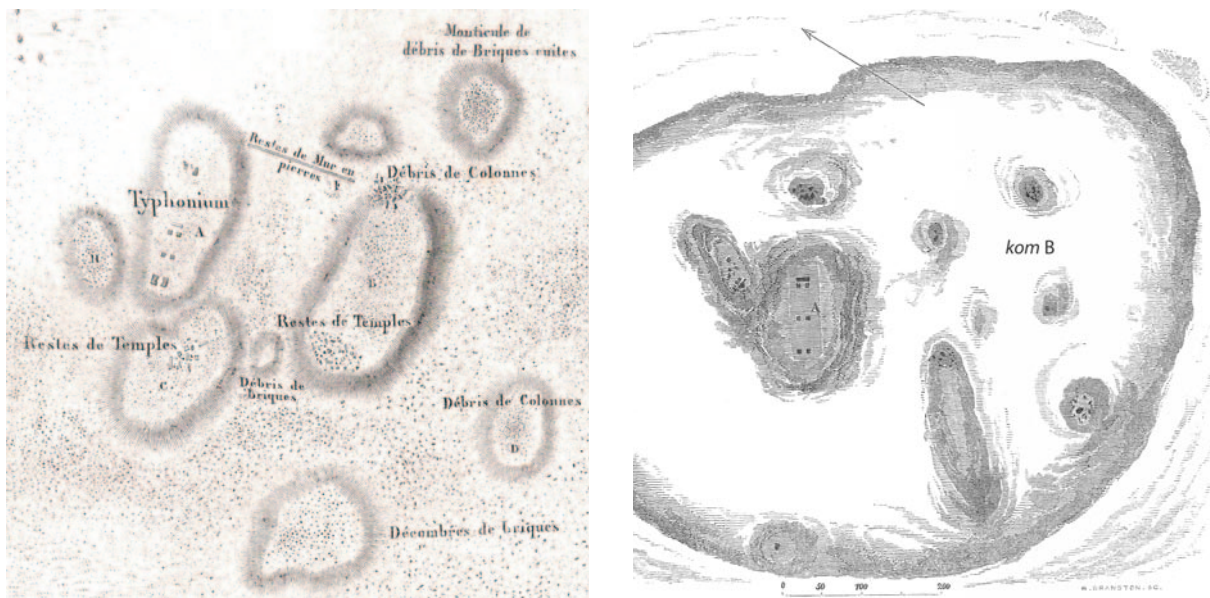


Fig. 1.1 Plan of the site of Wad Ben Naga published by Cailliaud in 1823 (*left*), showing kom B covering the remains of the Palace of Amanishakhete [Cailliaud 1823: I, pl. IX], and the same area on the plan of the site by Hoskins (*right*) with the approximate position of kom B [after Hoskins 1835: 114].

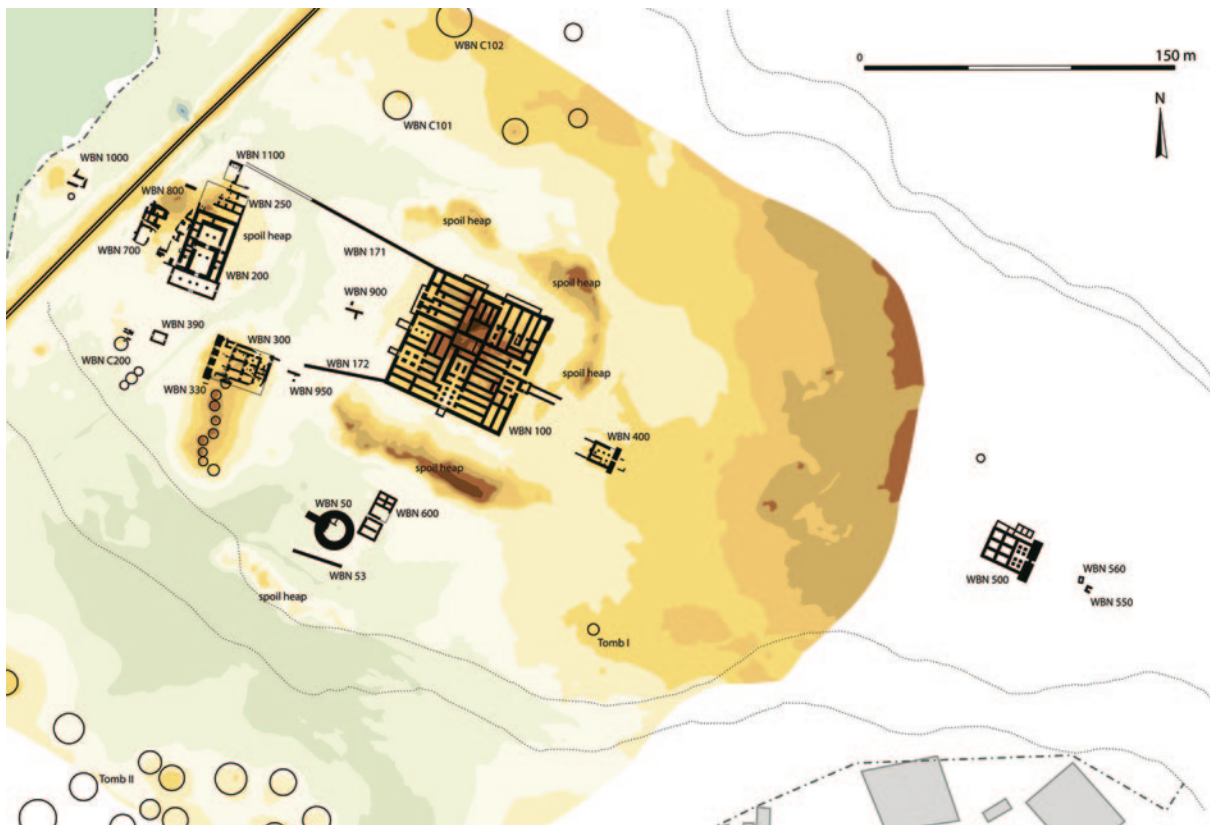


Fig. 1.2 The site of Wad Ben Naga in the present state of research with the Palace of Amanishakhete (WBN 100) in the centre.

monuments, yet besides Linant, Cailliaud, and Hoskins, none of them paid attention to the seemingly less preserved structures in the eastern part of the site, having focused mostly on the description of the so-called Typhonium (WBN 200).¹² Surprisingly, this was also the case of the members of the Royal Prussian Expedition who excavated in the western part of the site for a single day in March 1844,¹³ besides several additional visits by various members of the team.¹⁴

1.1.2 Archaeological research on kom B

Proper archaeological attention was paid to the remains of the palace for the first time by Thabit Hassan Thabit, the head of the expedition of the Sudan Antiquities Service which conducted excavations at the site between 1958 and 1960. In the winter of 1958/1959, the expedition carried out survey in the area of Cailliaud's kom B.¹⁵ The following season of 1959/1960 was dedicated nearly exclusively to the unearthing of the palace. During a short period of time, more than 60 rooms were cleared, with some walls still standing up to the height of 5 m. The palace turned out to be surprisingly well-preserved. It was therefore no surprise that a large number of artefacts and ecofacts were retrieved from the debris, some of which were accessioned in the Sudan National Museum and – in much lesser extent – in the study collection of the Institute de Papyrologie et d'Égyptologie de Lille.¹⁶ The results of the Sudanese excavations were partially published in a preliminary report by Jean Vercoutter in 1962.¹⁷ The head of the expedition, Thabit Hassan Thabit, was at that time fully occupied by the starting UNESCO campaign in Lower Nubia.¹⁸ Vercoutter, who incited the excavations at Wad Ben Naga,¹⁹ clearly visited the site at least on one occasion during the second season of the excavations.²⁰ He also created the first published plan of the uncovered remains of the palace. The latter was partly based on an aerial photo, however.²¹

On numerous occasions between 1960 and 2000, the site of Wad Ben Naga was visited and surveyed by Friedrich

W. Hinkel who captured the site on several series of photographs and created detailed plans of some of the structures unearthed by the Sudanese expedition, and of the site as a whole. Two distinct plans of the Palace of Amanishakhete were included among his drawings, based, at least in one case, on his survey carried out in 1977.²² It contained detailed measurements and valuable observations of various architectural details.

At latest in 1980s, the palace was surveyed by Ahmed M. Ali Hakem and its plan was also created.²³

In 1992 the remains of the palace were surveyed by Patrice Lenoble.²⁴

Since 2009, the Archaeological Expedition to Wad Ben Naga of the National Museum of the Czech Republic, headed by Pavel Onderka, has carried out excavations at the site. The archaeological works in the palace have taken place concurrently with the necessary gradual conservation of the already very decayed ruins. In 2009, a survey of stone architectural elements and collecting of pottery samples were carried out in the area of the palace. Between 2010 and 2019, excavations, reexcavations, and conservation works took place in the areas of the southern and western entrances, in the centre and in the eastern part of the structure, and at several spots in its exterior. The results of these works were published in the expedition's preliminary reports.²⁵

1.1.3 Previous studies on the Palace of Amanishakhete

As an archaeological structure with considerable impact on the understanding of Meroitic architecture, culture, economy, and history, the Palace of Amanishakhete has been discussed briefly in numerous publications on the general history of Nubia.²⁶ Vercoutter's preliminary report remained apparently the main source of information for all of these works.

Some photographs capturing the palace during the 1958–1960 excavations or taken shortly after were included in

¹² See *inter alia* Onderka 2015; Onderka – Vrtal 2018.

¹³ *LDT* V: 335–339.

¹⁴ See *Wad Ben Naga Report* IV.

¹⁵ Vercoutter 1962: 275–276.

¹⁶ Geus 1975.

¹⁷ Vercoutter 1962.

¹⁸ Vercoutter 1962: 263.

¹⁹ Vercoutter 1962: 263. See also University of Calgary Archives and Special Collections, 2001.031 02.22, letter from Jean Vercoutter to Peter L. Shinnie, 2 September 1958.

²⁰ See Vercoutter 1962: 277, fig. 8.

²¹ Vercoutter 1962: 278, fig. 8.

²² Hinkel – Sievertsen 2002: pl. IX.75; see also Hinkel Archive (Deutsches Archäologisches Institut), D-DAI-Z-Arch-FWH-Z1225–1232, D-DAI-Z-Arch-FWH-Z1250, D-DAI-Z-Arch-FWH-Z3408.

²³ Ali Hakem 1988: 92, fig. 10.

²⁴ Sackho-Autissier 2011: 359–361.

²⁵ *Preliminary Report 1; Preliminary Report 2; Preliminary Report 3; Preliminary Report 5; Preliminary Report 7; Preliminary Report 9; Preliminary Report 10; Preliminary Report 11; Preliminary Report 12; Preliminary Report 15; Preliminary Report 16; Preliminary Report 17.*

²⁶ *Inter alia* Adams 1984; Edwards 1996a; Welsby 1996; Török 1997b; Török 2002; Edwards 2004; Cabon *et al.* 2017; Wolf 2019.



Fig. 1.3 The Palace of Amanishakhete on an aerial photograph published by Georg Gerster in 1964, four years after the termination of the first excavations [© Estate Georg Gerster, Switzerland, www.GeorgGerster.com].

a couple of publications on ancient Nubia.²⁷ These photographs are invaluable in that respect that they show the ruins of the palace in the state of preservation at the time of its unearthing or shortly after (fig. 1.3).

A description of the palace was later included in a publication on Meroitic architecture by Ali Hakem.²⁸ Besides general observations, he contributed to the discussion by publishing a new plan of the structure and some previously unpublished photographs from the Sudanese excavations. In some detail, the architecture of the palace was later discussed by Hinkel and Sievertsen in the context of their study on palace architecture at Meroe.²⁹ In 1985–1986, the site of Wad Ben Naga was visited by a team from the University of Vienna and some archaeological material from the palace was published.³⁰ Due to the discovery of the palace at Muweis (Building A), which had the ground plan analogical to that of the

Palace of Amanishakhete, several comparative studies on the architecture of the two palaces were carried out.³¹

In 2011 and 2013, short treatises on the palace were published by the present author in his MA thesis and in an introductory publication on the site of Wad Ben Naga.³² Photographic documentation from the 1958–1960 excavations was published in 2016 by Onderka.³³ First results of an attempt at reconstructing the 1958–1960 excavations based on collected pieces of the original field documentation were published by the present author in 2017.³⁴ Doctoral dissertation dedicated to the palace was submitted by the present author at the University of Vienna in 2021 and defended in the following year.³⁵

27 Gerster 1964: 94–95; Shinnie 1967: pl. 9; Adams 1977: pl. IIIb.

28 Ali Hakem 1988.

29 Hinkel – Sievertsen 2002: 69–71.

30 Hofmann – Tomandl 1986. See also Zach 2012.

31 Baud 2010b; Baud 2011; Maillot 2014.

32 Vrtal 2011a; Vrtal 2013b.

33 *Wad Ben Naga Report I*.

34 Vrtal 2017.

35 *The Palace of Amanishakhete at Wad Ben Naga, Sudan*. DOI: 10.25365/thesis.71770.

Various objects retrieved from the Palace of Amanishakhete and accessioned in the Sudan National Museum were presented in numerous publications dealing with specific problems of Meroitic material culture. Among these, one can list objects published by Hofmann and Wenig in their studies on an unfinished statue of Sebiu-meker,³⁶ by Török in his studies on imports and Hellenistic influence,³⁷ by Hofmann in her study on imported amphorae,³⁸ by Ahmed Abuelgasim Elhassan in his study on Meroitic pottery decoration,³⁹ by Wöß on the representations of captives,⁴⁰ by Sackho-Autissier dealing with faience clasps⁴¹ and with some pieces of relief decoration,⁴² by Dufková who studied two Italian imports from the palace,⁴³ by Maillot in his study on Meroitic palaces and administrative buildings,⁴⁴ by David and Evina in their paper on pottery production,⁴⁵ etc. Various collections of objects retrieved from the palace were also subject of specializing studies published by the present author.⁴⁶

Several objects retrieved from the Palace of Amanishakhete were also presented in various exhibition catalogues.⁴⁷ The object entries were now and then accompanied by short treatises mentioning the palace.⁴⁸

Neither a comprehensive list of finds nor most of the artefacts have been published to date, however.

1.1.4 Studies on other Meroitic palaces and administrative buildings

Clearly, the evaluation of the Palace of Amanishakhete must be carried out with respect to the general context of Meroitic architecture, cultural and socio-economic history, its ideological and religious milieu, and material culture. For such considerations, studies dedicated to other Meroitic residential and administrative buildings come first to one's mind, as such structures represent the closest *comparanda* to the Palace of Amanishakhete.

Defining the attributes and limits thereof for such classes of structures proves difficult, however.⁴⁹

Among the primary *fontes* on structures that would fall into the same category of buildings, one can name the excavation reports and their editions on the possible palaces at the sites of *inter alia* Meroe,⁵⁰ Jebel Barkal,⁵¹ Muweis,⁵² el-Hassa,⁵³ Kerma,⁵⁴ Dokki-Gel,⁵⁵ Kedurma,⁵⁶ Faras,⁵⁷ Karanog,⁵⁸ Hamadab,⁵⁹ Awlib,⁶⁰ Musawwarat es-Sufra,⁶¹ Naga,⁶² Alim,⁶³ Jebel Khareik,⁶⁴ Jebel Nasb es-Sami,⁶⁵ or Jebel Hardan.⁶⁶ Besides these, also textual primary sources can be exploited.⁶⁷

A number of more or less general and more or less detailed interpretative studies dealing with various problems related to these structures has appeared as well, and these studies form the second pillar supporting the state of research on which the present volume can build. Again, the list can be rather extensive, but to include a few, one can name studies of Adams, Ali Hakem, Hinkel, and Welsby on Meroitic architecture,⁶⁸ studies of Fitzenreiter on Kushite palaces and Nubian residential buildings,⁶⁹ classifications of residential buildings by Hinkel and Sievertsen,⁷⁰ Török's hypotheses on the ambulatory kingship and the administrative-religious landscape of the Kushite kingdoms,⁷¹ studies on Kushite administration and economy by Endesfelder, Török, Vincentelli, Edwards, and Welsby,⁷² studies on Meroitic

49 See chapter 8.1.

50 LAAA V; LAAA VI; Török 1997a; Hinkel 2001; Hinkel – Sievertsen 2002; Sievertsen 2002; Grzymski – Grzymska 2008; Sievertsen 2013.

51 Donadoni 1984; Donadoni 1986; Bosticco 1989; Donadoni 1990; Kendall 1991; Donadoni 1993; Roccati 2004; Roccati 2008; Barberini 2010; Kendall 2014; Roccati 2014; Ciampini 2014–2015; Ciampini 2015–2016; Ciampini 2018; Taurino 2018; Ciampini 2019.

52 Baud 2008; Baud 2010b; Baud 2011; Baud 2015; Maillot 2013; Maillot 2014; Maillot 2016a; Maillot 2016b.

53 Rondot *et al.* 2022: 37–41.

54 Bonnet – Salah ed-Din 1984.

55 Salah ed-Din 2004.

56 Edwards 1996a; Edwards 2011.

57 LAAA XIII; Grzymski 1982.

58 Woolley 1911.

59 Wolf, S. *et al.* 2011; Wolf, P. *et al.* 2014; Wolf, P. *et al.* 2015.

60 Mahmoud El-Tayeb – Kołosowska 2005.

61 Wenig 2001; Eigner 2010.

62 Knudstad – Frey 1998.

63 Bradley 1992: 186.

64 Bradley 1992: 190.

65 Hintze 1959b: 188.

66 Hintze 1959b: 187.

67 FHN I–III.

68 Adams 1984; Ali Hakem 1988; Hinkel 1996; Welsby 1996.

69 Fitzenreiter 1996a; Fitzenreiter 1999.

70 Hinkel – Sievertsen 2002; Sievertsen 2002; Sievertsen 2013.

71 Török 1992; Török 1995.

72 Endesfelder 1977; Török 1977; Török 1979a; Vincentelli 1994; Edwards 1996a; Welsby 1996; Edwards 2004; Vincentelli 2018a; Vincentelli 2018b.

36 Hofmann 1972; Hofmann 1975; Wenig 1979.

37 Török 1989; Török 2011.

38 Hofmann 1994.

39 Elhassan 2004.

40 Wöß 2004.

41 Sackho-Autissier 2011.

42 Sackho-Autissier 2018.

43 Dufková 2015.

44 Maillot 2016a.

45 David – Evina 2016.

46 Vrtal 2021; Vrtal 2022; Onderka – Vrtal 2022a: 399ff; Vrtal 2023a.

47 Geus 1975; Wenig 1978; Reinold *et al.* 2000; Sauquet – Villalta 2003; Welsby – Anderson 2004; Baud 2010a; Abdel-Rahman Ali Mohamed – Anderson 2013; Onderka – Vrtal *et al.* 2014.

48 Hinkel 1996; Reinold *et al.* 2000; Baud 2010b; Vrtal 2014.

palaces by Baud, Maillot, and Schellinger,⁷³ and the present author's previous analyses of Meroitic residential buildings and settlements.⁷⁴

1.2 Methodology

The present publication deals with an analysis and interpretation of a single archaeological structure in its whole complexity; taking into consideration its construction, periods of use and potential reuse, as well as its general position in the ideological and socio-economic milieu of the Meroitic kingdom.

1.2.1 Sources of information

The sources of information on the Palace of Amanishakhete can be divided into several groups based on their type, reliability, and informational value. This situation stems from the fact that the archaeological structure has been almost completely excavated previously, and the present study thus represents a revision of the available archaeological and archival materials supplemented by test excavations.

The sources of information on the 1958–1960 excavations in the structure include available pieces of the original field documentation, finds accessioned in museal collections (mainly the collections of the Sudan National Museum⁷⁵), archival documents such as notes and photographs, and published accounts presenting first-hand observations.⁷⁶ The data acquired from these sources are both primary and secondary in their nature, as some of them represent direct representation of the reality (photographic documentation, the finds), while in the case of others (reported find spots, dates of retrieval, descriptions and interpretations of archaeological contexts, etc.), the reality is blurred by the mediated nature of the observation and previous interpretations, the accuracy of which has to be tested against other evidence – if it is available – and the reliability of which has to be assigned appropriate weight.⁷⁷ Even the secondary pieces



Fig. 1.4 The Palace of Amanishakhete on an aerial photograph (cropped) captured by Friedrich W. Hinkel in 1999 [© Deutsches Archäologisches Institut Berlin, Archiv der Zentrale, Archiv Friedrich W. Hinkel].

of information provided by these sources are nevertheless invaluable, as they record data which either have been lost on account of the destructive nature of the archaeological fieldwork and the degradation of the remains of the structure or those that could be verified only at the expense of excessive efforts (e.g. by reexcavating the whole of the structure from post-excavational debris and fill).

The previous sources were thus supplemented also by test excavations and reexcavations in the palace by the Archaeological Expedition to Wad Ben Naga, which provided additional primary data.⁷⁸ The positions of test pits were determined by problem solving questions (besides the conservation efforts). In several areas, the original undisturbed stratigraphy could be detected and examined.

Archaeological data from the growing number of *comparanda* to the Palace of Amanishakhete further allowed to test the primary and secondary data from the archaeological context of the palace and view them from a wider perspective, thus enabling their proper assessment, analysis, and interpretation.

⁷³ Baud 2010b; Baud 2010d; Maillot 2015a; Maillot 2015b; Maillot 2016a; Schellinger 2017; Maillot 2018; Schellinger 2018.

⁷⁴ Vrtal 2011a; Vrtal 2011b.

⁷⁵ The present author is indebted to Abdel-Rahman Ali Mohamed, the general director emeritus, to Juweriya Osman Mohamed Zain, Ghaliya Garelnabi Abdelrahman Babiker, Ikhllass Abdlatief Ahmed Idriss, and other staff of the National Corporation for Antiquities and Museums for the possibility to study the collections of the Sudan National Museum.

⁷⁶ Not only those of Vercoutter, but also Hinkel and possibly Ali Hakem.

⁷⁷ See chapter 2.

⁷⁸ See chapter 3.



Fig. 1.5 The remains of the Palace of Amanishakhete as seen from the northern (*top*) and southern spoil heaps (*bottom*).

1.2.2 Methodology and data assessment

In chapter 2, the available field documentation from the 1958–1960 excavations is analysed, in order to obtain more pieces of information on the structure’s original architecture, archaeological contexts, find spots, etc. Extensive photographic documentation, recorded not only by the archaeological mission but also a few visitors to the site, is compared with the published and archived plans of the structure, recorded objects, published reports, and the current state of preservation. Based on the data from the photographic documentation, find entries, object labels, and published reports, the progress of excavations is reconstructed, as well as find spots for a significant number of the recorded finds.

In chapter 3, archaeological report on test excavations and reexcavations by the Archaeological Expedition to Wad Ben Naga is presented. The test excavations and reexcavations comprised the survey of surface features in the structure (primary spatial context of *kom* B) and of the archaeological material redeposited in 1958–1960 around the perimeter of the structure (secondary spatial context), clearing of archaeological contexts from post-excavation fill, sampling of the archaeological material from spoil heaps, and test excavations of undisturbed strata. Stratigraphic method was employed if the nature of the contexts allowed.

In chapters 4–5, analysis of recorded artefacts and ecofacts retrieved from the spatial context of the palace is carried out. The majority of the artefacts and ecofacts come from the 1958–1960 excavations and their archaeological contexts could be reconstructed only partly or the information about them was completely missing. At the same time, the artefactual evidence represents one of the richest sources of information on the palace. A specific strategy of their evaluation thus had to be adopted in order to enhance the informational value of the individual finds or groups of finds.

Throughout the analysis, it was taken into consideration that all artefacts were subjects of considerable formal and spatial transformations during their “life-history”.⁷⁹ Only at the time of their production or entering the spatial context, the artefacts could provide us directly with the information on the activities and intentions of their original users and, potentially, also on the dating of such activities. Most of the artefacts nevertheless underwent additional pre-depositional and post-depositional transformations before entering the archaeological record. The majority of artefacts that were once present in the spatial context had in fact exited it

⁷⁹ Neustupný 2007: 54.

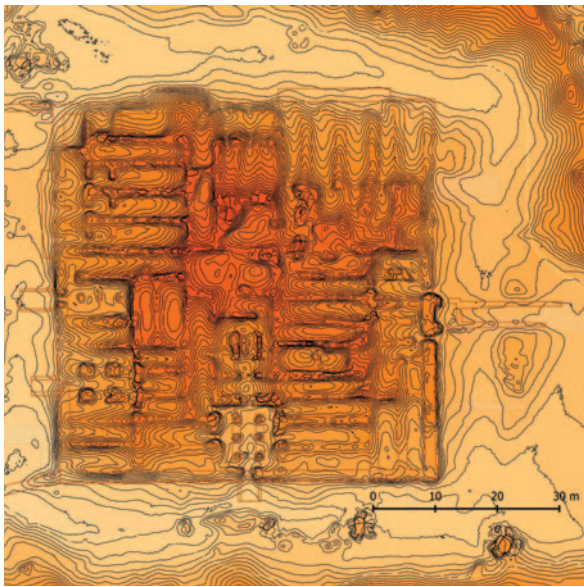


Fig. 1.6 Elevation model of the remains of the Palace of Amanishakhete in the current state of preservation; isohypses at the interval of 0.1 m.

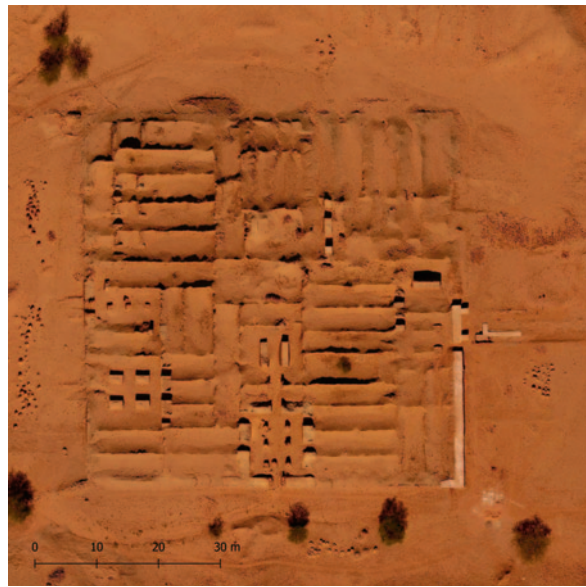


Fig. 1.7 Aerial view of the remains of the Palace of Amanishakhete in the current state of preservation [Photo: Alexander Gatzsche].

through discard, exchange, or transport. The finds that remained may have been considered refuse⁸⁰ or they were transformed into “dead” artefacts by the sealing of the context (e.g. by being buried under rubble). The assemblage of objects is thus not only incomplete, but also heavily biased towards objects of erstwhile low or no value. At the same time, many artefacts may have undergone transformation from the primary function to the secondary one.⁸¹

All these transformations and different chronological contexts were taken into consideration while analysing the artefacts excavated in the spatial context. The structure probably fulfilled its primary function for some time, before being eventually used for other purposes. The remains of the structure and the artefacts retrieved from its ruins thus represented a cumulative assemblage of artefacts with diverse meaning,⁸² for a proper under-

standing of which it was – above all – important to attempt to distinguish between those artefacts that possibly represented the testimony of the primary, intended functions of the palace and those that arguably related to the use of the structure in its possible secondary functions.

In the study of pottery (chapter 5), quantification analysis was used in addition to the abovementioned analysis for comparing the individual groups of archaeological contexts, which were established based on the archaeological data. The contexts under comparison were both internal and external. Their comparison revealed possible chronological and functional implications.

The analytical chapters 2–5 represented a considerably updated collection of data on which the previous state of research on the Palace of Amanishakhete could be tested. Four subjects relating to the Palace of Amanishakhete were addressed based on these data, namely (1) the architectural form of the palace, (2) the chronological setting of the construction of the palace, its period of operation, and destruction, (3) the functions of the palace and its spatial context, and (4) the setting of the palace in the context of the site of Wad Ben Naga and the ideological and socio-economic milieu of the Meroitic kingdom. The presented subjects are discussed in chapters 6–9.

⁸⁰ Sommer 1990.

⁸¹ Or a transformation from a single artefact to many, i.e. fragmentarisation, – consider, for example, reused potsherds.

⁸² All artefacts, ecofacts, and their transformations were also considered from two perspectives: as reflections of events that occurred in the primary spatial context of the palace, thus providing us with the context of their creation or transformation, and as reflections of a structural system, through the understanding of which the function of an artefact and the human intentions behind it may be revealed; see Neustupný 2010: 268.

2 ARCHAEOLOGICAL EXPEDITION OF THE SUDAN ANTIQUITIES SERVICE, 1958–1960

In the following chapter, the primary field documentation from the 1958–1960 excavations in the Palace of Amanishakhete is presented and discussed, as well some other contemporary accounts. Attempt at reconstructing the progress of excavations and find spots of various finds is presented based on the examination of the data.

2.1 Archaeological documentation from the 1958–1960 excavations

2.1.1 Photographic documentation

The excavations carried out by the Sudan Antiquities Service were regularly documented by the means of a camera, as evident from a large number of photographs coming from different sources. A small part of this volume was published in Vercoutter's preliminary report on the excavations.¹ The second and much larger collection was stored in the archives of the Section française de la direction des antiquités du Soudan (henceforth SFDAS)² and recently made available for research.³

The photographs are invaluable in that respect that they often show the original archaeological contexts, positions of various artefacts in the fill, as well as the architecture of the palace before its subsequent post-excavational destruction through erosive processes. In addition, the photographs also capture the archaeological works themselves, and thus allow to partly reconstruct their methodology. Given this informational value of the photographs, which often provided unique pieces of information, an annotated overview of all the photographs is included below.

2.1.1.1 Vercoutter's preliminary report

In Vercoutter's preliminary report, a number of photographs of both archaeological contexts and artefacts dis-

covered on *kom* B were included. These photographs can either be directly paired with photographs from the archives of the SFDAS or they clearly supplement them.⁴ Unlike the latter, photographs provided by Vercoutter have captions or a reference in the text, and thus can be directly matched to actual artefacts or locations.

Fig. 6: The photograph captures object SNM 62/10/162,⁵ i.e. the head of a statue of the god Sebiemeker. The photograph is identical to photograph SAS.102.

Fig. 7: The photograph captures object SNM 62/10/161, i.e. a pilaster capital (?) with the depiction of the god Apedemak. The photograph is identical to photograph SAS.080.

Pl. XVIIIb: An aerial view of Central Wad Ben Naga. The view captures the palace shortly after excavations. Several features are notable: (1) The picture captures regular limits of an area around the palace, which was either excavated, cleaned from surface debris, or dusted with disintegrated lime plaster during its removal. Since recent excavations in the exterior of the structure did not show other traces of previous excavation but clearing of the exterior wall, the latter two options seem most likely. Only a part of ramp WBN 161–162 seems to have been excavated. (2) By the northern exterior wall, two or possibly even three discrete ramp/podium structures are visible.

Fig. 9: The photograph captures two composite column capitals (type 3⁶) and a column drum discovered in room WBN 156. The same archaeological situation is captured on photographs SAS.074 and SAS.079. The capitals seem to rest on remains of two brick pillars in the room. As they lied on mudbrick core, while the fired brick casing around seems to be quarried away, the location of the pieces was clearly secondary.

Fig. 10: The photograph captures a composite column capital (type 2⁷) discovered in room WBN 156. The original position of (the same or another identical) capital in the debris is captured on photographs SAS.075 and SAS.076, which can thus be also attributed to the room.

Fig. 11: The photograph captures object SNM 62/10/130.

Fig. 12: The photograph captures object SNM 11970.

Fig. 13: The photograph captures object SNM 62/10/129.

¹ Vercoutter 1962.

² The present author would like to express his sincerest gratitude to Abdel-Rahman Ali Mohamed, the director general emeritus of the National Corporation for Antiquities and Museums, and Vincent Francigny, the director emeritus of the Section française de la direction des antiquités du Soudan, for making the photographic documentation stored in the archive of the SFDAS available for research.

³ *Wad Ben Naga Report I*: chapter 2.5; Vrtal 2017.

⁴ It may be even suggested that some of the photographs which were used for the report are missing in the collection from the archives of the SFDAS, despite originally having constituted its part.

⁵ For the finds accessioned in the Sudan National Museum, see chapters 4 and 5 and Appendix.

⁶ See chapter 6.2.6.

⁷ See chapter 6.2.6.

Fig. 14: The photograph captures object SNM 62/9/101. The photograph is possibly identical to photographs SAS.103–104.

Figs. 15–16: The photographs capture object SNM 62/10/23.

Fig. 17: The photograph captures object SNM 62/9/107.

Fig. 18: The photograph captures object SNM 62/10/167.

Fig. 19: The photograph captures object SNM 62/9/30.

Fig. 20: The photograph captures object SNM 62/9/43.

Fig. 21: The photograph captures object SNM 62/9/31.

Fig. 22: The photograph captures object SNM 62/9/55b.

Fig. 24: The photograph captures object SNM 62/9/37b.

Fig. 25: The photograph captures object SNM 62/10/123.

Fig. 26: The photograph captures object SNM 62/9/25.

Fig. 27: The photograph captures object SNM 62/9/71.

Fig. 28: The photograph captures object SNM 62/10/38. The photograph is identical to photograph SAS.142.

Fig. 29: The photograph captures object SNM 62/10/35

Fig. 30: The photograph captures object SNM 62/10/51.

Pl. XIXa: The photograph captures the remains of the palace viewed from the west, spanning rooms between WBN 104 on the left and WBN 103 on the right. In the foreground, sondage 1⁸ is visible. The photograph was likely taken from the same spot as photographs SAS.048–050 and SAS.062.

Pl. XIXb: The photograph captures the entrance to room WBN 142. On the left, torus moulding is visible on the façade; on the right, exterior ramp WBN 161–162 can be noted, being already in a very poor condition.

Pl. XIXc: The photograph captures rooms WBN 154 and WBN 155. The photograph is identical to photograph SAS.020.

Pl. XXa: The photograph captures a room in the south-western part of the palace; one of three rooms WBN 101–102 and WBN 159 comes into consideration, based on the position of the rail embankment and sondage 1 in the background. Two phases of construction were noted by Vercoutter in the caption without providing further arguments; these phases most likely corresponded to the use of two distinctive mudbrick types throughout the structure, changing at the floor level.⁹ The photo may be a cropped version of photograph SAS.059.

Pl. XXb: The photograph captures the archaeological situation in room WBN 104 with objects SNM 62/9/68 and SNM 62/10/170. The photograph is identical to photograph SAS.125.

Pl. XXc: The photograph captures a room with a find of sixteen handmade blackware spherical jars with narrowing neck. The room can possibly be identified as WBN 108.¹⁰ The photo is identical to photograph SAS.136.

Fig. 31: The photograph captures object SNM 62/9/39.

Fig. 32: The photograph captures object SNM 62/9/97.

Fig. 33: The photograph captures object SNM 62/9/98. The photograph is identical to photograph SAS.139.

2.1.1.2 Photographic documentation from the archives of the SFDAS

The collection includes altogether 173 photographs from both archaeological seasons of the Sudan Antiquities Service at Wad Ben Naga which relate to excavations in the Palace of Amanishakhete. The photographs were previously published by Onderka in *Wad Ben Naga Report I*; the numerical designations from the latter publication will be followed in the present volume, prefixed by SAS (Sudan Antiquities Service) for clear identification of the source.

SAS.001: The photograph captures the first season of excavations, which was focused largely on establishing the limits of the structure.¹¹ There are 39 workmen cleaning the exterior wall. Based on the position of shadows, an acacia tree on the very left, and a trench limit in the foreground (sondage 1), the western exterior wall is most likely the one being captured. A column drum can be seen lying on the right, next to the exterior wall. Notably, wall remains rise from the top of the *kom*. A basket is lying nearby, indicating that clearing was carried out in this area already during the first season.¹² Some wall remains are notable also on a prominent mound on the left.

SAS.002: The photograph captures a scene similar to photograph SAS.001 and taken from the same spot. Thirty-five workmen and a *rais* are captured.

SAS.003: The photograph likely, but not necessarily captures the first season of excavations. Either the exterior wall seems to be cleared or rooms start to be cleared from the perimeter inwards. Based on the position of the vegetation, the telegraph line and shadows, the northern side is the one depicted, close to the western corner. Thirty-six workmen are present. The formation of the northern spoil heap is captured as well. In the foreground, there appears to be a cut in the *kom*, revealing mudbrick debris (?), rather than a wall.

SAS.004: The photograph captures a scene similar to photograph SAS.003 and taken from the same spot. Thirty-five workmen are captured.

SAS.005: The photograph captures the first season of excavations; clearing of the exterior wall is captured. In the background, hills to the east of the present village are captured, which is in concordance with the position of shadows; the northern exterior wall is thus being cleared, likely in the vicinity of the north-western corner. In the foreground, the wall seems to be formed of fired bricks laid on their edges, representing the foundations of the wall. In trench T20, the northern exterior wall was indeed preserved only to this height.¹³ The surrounding soil seems to be formed of brick debris to a considerable extent. Seventeen workmen and the *rais* are captured.

8 See Vercoutter 1962: 275; Vrtal 2017: 69.

9 See chapter 6.2.1.

10 See chapter 2.2.3.5.

11 See Vercoutter 1962: 275–277; Vrtal 2017: 69.

12 See the discussion on the find spot of stucco fragments (SNM 11970–11971) from the first season; chapter 4.1.2.

13 See chapter 3.5.

SAS.006: The photograph captures the first season of excavations; clearing of the exterior wall is captured. The vegetation and the telegraph line in the background indicate that the northern exterior wall is the one being cleared on the picture. Minimum 35 workmen and the *rais* are captured. In the foreground, the northern spoil heap is being formed, with fired brick fragments predominating. A regular pile of fired bricks from the clearing is located on the right. The clearing is carried out from both sides. On the left, the workmen are likely clearing remains of podium structure WBN 167E. On the top of the *kom*, remains of free-standing walls are notable. Their relatively distinct structure indicates that fired bricks are included or predominating. Below, the position of walls is marked on the surface of the *kom* by their darker colour, in contrast to a lighter fill (likely disintegrated lime plaster¹⁴). Rooms WBN 127 and WBN 144 are likely candidates.

SAS.007: The photograph captures a scene similar to photograph SAS.006 and taken from the same spot.

SAS.008: The photograph captures the first season of excavations; clearing of the exterior wall is captured. The scene is similar to photographs SAS.001–002. The western exterior wall is captured. Twenty-five workmen and the *rais* are captured. The sandstone block or column drum on the right is the same as on the aforementioned photos. In the centre, a trial trench cuts well into the *kom*, likely in the area of room WBN 158.

SAS.010: The photograph captures the second season of excavations (December 1959 or early January 1960). In the centre of the photo, clearing of room WBN 154 is underway. In the foreground, rooms WBN 110 and WBN 111 are excavated, but largely blocked from view. The surface of the *kom* is well-visible with grass growing from the soil and numerous nodules of disintegrated lime plaster. Rooms WBN 133–136 are also fully excavated and rooms WBN 138–141 behind them are being excavated. The southern spoil heap is visible on the right, the excavation house, tents, and spoil heap of the so-called Eastern Temple (WBN 500)¹⁵ can be seen in the background. A column drum (?) is situated near ramp WBN 163. Twenty-four workmen and the *rais* are captured. The photograph was taken from a similar spot like photographs SAS.022–023.

SAS.011: The photograph captures the second season at the end of excavations. The palace is viewed from the east. Almost whole length of the eastern exterior wall is captured. In the foreground, fragments of the larger-than-life-size statue of Sebiuameker are scattered; behind, column drums are deposited in a row. To the left of the column drums, torus moulding can be noted on the façade. On the right side, remains of exterior ramp WBN 161–162 are well-visible.

SAS.012: The photograph captures the second season at the end of excavations. The palace is viewed from the east. Rooms WBN 139 to WBN 143 are captured. On the left, column drums are deposited in the foreground. In the centre, full length of ramp WBN 161–162 is visible.¹⁶ In the entrance to WBN 128,

two circular features can be noted in the section, which can be seen in detail on photographs SAS.025–026.

SAS.013: The photograph captures the second season at the end of excavations. The palace is viewed from the east. Rooms WBN 141–143 are captured. Torus moulding is well-visible on the façade on the left. Nearly complete remains of exterior ramp WBN 161–162 are captured in the foreground, part of the northern wing is missing. Transition in the thickness of the walls of the ramp can be noted on both wings.

SAS.014: The photograph captures the second season at the end of excavations. The palace is viewed from the east. Rooms WBN 139 to WBN 141 are captured while being cleared. Eleven workmen and the *rais* are present. Torus moulding is well-visible on the right. In the foreground, there are deposited column drums and abaki/bases.

SAS.015: The photograph captures the second season at the end of excavations. The room depicted can be likely identified as room WBN 120, based on the direction of the shadow and similarities to photograph SAS.068. The room is captured in the much better state of preservation than during reexcavation in trench T35.¹⁷ The floor is well defined and the wall between rooms WBN 119 and WBN 120 reaches the height of almost 2 m, thus precluding direct communication between the two rooms on this storey¹⁸ or any other room to the west or east.¹⁹ The nature of three dark spots on the eastern wall of the room is not evident from the photo: they may represent either cavities or protrusions. The white stains on the wall may represent remains of the original whitewash, but they could as well come from digging tools.

SAS.016: The photograph captures the second season at the end of excavations. The room depicted can be most likely identified as room WBN 117. The identification relies on the east-west orientation indicated by the agricultural land and the telegraph line in the background, as well as the ascent of the *kom* towards the north and the orientation of the surrounding rooms to the west. The northern wall is preserved up to the height of ~3.5 m; a change of mudbrick may be indicated by slightly darker courses in the lower sections. A small ledge is visible on the western wall.

SAS.017: The photograph captures the second season at the end of excavations. The position of the room cannot be established based on the available data. The room is clearly of a smaller size and was divided by a light wall. The underlying surface is uneven, which may indicate that the floor was removed and the light wall served to fortify the fill under it.

SAS.018: The photograph captures the second season of excavations. A considerable brick debris is captured with a large spoil heap in the background, possibly the southern spoil heap of the palace. In such a case, the debris could be located by the southern limit of the *kom*.

14 See the stratigraphy in trenches T22, T35, and T57; chapters 3.6, 3.8, 3.13.

15 *Wad Ben Naga Report II*.

16 See photograph D-DAI-Z-Arch-FWH-F-KB-sw-075-04.

17 See chapter 3.8.

18 See also photographs SAS.031–032. For discussion on the function of these rooms as communication see discussion in chapter 3.8.

19 See also photographs SAS.067–068, D-DAI-Z-Arch-FWH-F-MF-sw-R377-12.

SAS.019: The photograph captures the second season at the end of excavations. In the foreground, foundations of ramp WBN 163 are visible, with bricks laid as inclined rowlocks. In the centre, room WBN 154 can be identified, with its sandstone door jambs and three pairs of sandstone columns. The threshold, now lost, is partly made of fired bricks. Entrances to rooms WBN 111 and WBN 157 are clearly defined on the left. In the rear, the northern wall of room WBN 156 is visible, as well as a brick laid on the floor in the north-eastern corner of the room and captured in detail on photographs SAS.038–039. The upper sections of walls of room WBN 157 are well-visible, showing no remnants of the ramp mentioned by Vercoutter.²⁰ Unlike in Hinkel's plan, only small parts of it seem to be made with fired brick casing. A pounder rests on the western column of the southernmost pair of columns. A footed (?) shallow bowl or lid is deposited on the eastern one, together with two other sherds.

SAS.020: The photograph captures the second season at the end of excavations. The photograph captures a scene similar to photograph SAS.019, only taken from a shorter distance.

SAS.021: The photograph captures the second season towards the end of excavations. In the centre, room WBN 154 can be seen, viewed from the north-east. In the foreground, part of room WBN 155 is situated. The dent in wall WBN 154/155 may have been cut for a later burial, but there is no clear evidence to support this assumption. In the background, the southern spoil heap and the remains of the so-called Circular Building (WBN 50)²¹ can be noted. Eight workmen are captured on the photograph.

SAS.022: The photograph captures a scene similar to photograph SAS.010. In the foreground, *kom* with debris overlying unexcavated rooms WBN 101 and WBN 102 can be seen. Behind, two rooms WBN 110 and WBN 111 can be clearly identified. In room WBN 110 on the right, a depression in the floor can be seen, as well as debris in the north-eastern corner, both perhaps from a vessel emplacement. In room WBN 111, four or five vessel emplacements are situated by the northern wall.²² The vessel emplacements are likely identical with those captured in detail on photographs SAS.150 and SAS.154. Room WBN 154 with three pairs of sandstone columns can be seen behind, followed by room WBN 155 to the left. Sandstone architectural elements (?) are deposited by the entrance to room WBN 154 and ramp WBN 163. Rooms WBN 133–136 are visible further to the east, with a vessel (?) set in the floor by the eastern wall of room WBN 135. Rooms WBN 138–141 can be seen excavated in the background. Further to the east, excavation house is situated together with several tents and *rakubas*. Eighteen workmen are captured.

SAS.023: The photograph captures a scene similar to photographs SAS.010 and SAS.022. In the foreground, room WBN 112 (and WBN 113?) are still unexcavated, showing the original surface of the *kom*, and four workmen are captured excavating room WBN 157 from the south. Behind, rooms WBN 154 and WBN 155 are fully excavated, together with room WBN 111 to the right and rooms WBN 132–136 further to the east. Works proceed in the area of rooms WBN 138–141; 20 workmen are captured in this area.

SAS.024: The photograph captures the second half of the second season of excavations. The entrance to room WBN 154 is captured on the left, with rooms WBN 155 and WBN 156 visible farther to the north. A sandstone column drum is deposited in the foreground, in the exterior of the palace. Rooms north of room WBN 156 seem unexcavated. On the right, rooms WBN 132–136 are fully excavated. A single sub-adult workman (?) is captured.

SAS.025: The photograph captures the second season at the end of excavations. Based on comparison with SAS.012, the feature captured on the photograph can be clearly identified as the entrance to room WBN 128. On the right, wall WBN 143/148 is rather only roughly cleared; mudbricks seem to predominate. An elongated vertical break in the wall is apparent close to the entrance, probably caused by erosion. Two bricks, possibly fired, protrude from the face of the wall; they do not seem to be *in situ*. Wall WBN 128/143 is made of mudbrick with fired brick door jamb only.²³ In the upper part, the door jamb recedes by ca 20 cm and continues upwards, likely in fired bricks. This step reminds strongly of a similar step in room WBN 119 that can be noted on photographs SAS.031–032. At the same height as the step, a wooden lintel seems to be laid horizontally, resting on the step in the wall and in wall WBN 143/148. On the lintel, either a wall or brick debris can be noted, with at least two rows of bricks sloping towards the north. The space representing the entrance to room WBN 128 is filled with brick debris (the lower part) and mud deposited in thin layers (the upper part). Remains of a nearly fully disintegrated wooden threshold can be noted at the floor level, corresponding to the pocket in the door jambs that was to accommodate it. At about a half of the height, a different structure in the section can represent either another piece of wood or mud layers. Two curious circular features can be clearly noted just under the lintel. It is hard to tell their nature from the photograph, but given their shape, they might represent negative imprints of wooden posts. The section remained unexcavated, as apparent from a later aerial photograph (fig. 1.3).²⁴

SAS.026: The photograph captures a scene similar to photograph SAS.025. A 1 m scale was added to the section. Unlike in the case of photograph SAS.026, the fill above the lintel can be seen completely, showing five inclined rows of bricks. The nature of the fill is unclear, and it cannot be estimated whether it represented a wall blocking or (perhaps more likely) brick debris.

SAS.027: The photograph captures the second season at the end of excavations. The feature photographed is an irregular section of fired brick casing of a wall built predominantly of mudbricks and preserved up to ca 1.5 m. Minimum two bricks inserted into the floor (?) can be further seen below, laid as rowlocks. Neither the room nor the wall can be identified, although it is highly likely, judging from the shadows, that south-eastern corner of a room is captured.

SAS.028: The photograph captures the second season at the end of excavations. A ca 2 m high mudbrick wall is captured with a small section of fired brick casing, starting at the height

20 Vercoutter 1962: 279; see also Hinkel – Sieversten 2002: pl. X.66.

21 See *Wad Ben Naga Report III*.

22 See also photograph Shinnie exp. neg. 1423; Shinnie 1967: pl. 7.

23 Cf. Hinkel – Sievertsen 2002: pl. IX.75; see chapter 3.7, fig. 3.22, WBN 129, door jamb north.

24 Gerster 1964: 94–95; see also photograph D-DAI-Z-Arch-FWH-F-KB-sw-075-04 dated 2 March 1960.

of ca 1 m above the floor. The wall cannot be identified, although based on the strong light, it is probably the southern face. The fired brick casing may have supported a lintel or an architectural element in a higher storey.

SAS.029: The photograph captures a scene similar to photograph SAS.027. The structure of the wall is more distinctive, showing that the fired brick casing continued towards the corner. A dent in the preserved wall can be seen above the casing, which might indicate the function of the casing.

SAS.030: The photograph captures the second season at the end of excavations. In the centre, a ca 1.2 m high baulk is captured, preserving the fill of a room. At the half of its height, several rows of bricks can be noted, roughly horizontal. These rows might represent either a secondary blocking or other alteration of the space in the room, and might be the reason for the baulk to be preserved, although it is also possible that they represent debris from brickwork above. On the right, there is corner of a mudbrick wall, with a ca 2 m long and 0.8 m wide wing protruding to form an entrance to the room captured. The door jamb likely has fired brick casing. On the left, there is a long mudbrick wall. Based on the shadows, the view is likely towards the west. Comparing the photograph to the aerial photo of the palace,²⁵ as well as Vercoutter's plan (fig. 2.3, *left*),²⁶ the most likely candidate for the room captured is room WBN 106.

SAS.031: The photograph captures the second season at the end of excavations. The room on the photograph can be identified as room WBN 119, viewed from the south. The floor of the room is well-defined in the centre. On the left, a baulk preserving the original fill of the room can be seen. The baulk was examined during excavations in trench T35.²⁷ Behind the baulk, wall WBN 119/120 can be noted, with some 28 rows of brickwork preserved (ca 2.7 m) from the floor up. To the right, wall WBN 119/122 is preserved to the height of 30 rows of brickwork from the floor, representing ca 2.8 m. The top of the wall forms a step of 0.4 m, behind which the brickwork continues upwards. The step is very similar to the step on photographs SAS.025–026 and possibly represented a support for joists of a wooden floor. The section of the wall from the step up might be built of fired bricks. Further to the right, wall WBN 119/121 can be seen with a regular, rectangular dent. There is a possibility that the dent indicates the location of an opening, but it does not seem very likely given its height, the absence of casing, and the situation as viewed on photograph SAS.040. Behind the wall further to the east, a part of the baulk examined in trench T22²⁸ can be noted, as well as a section of fired brick (?) wall WBN 121/122.

SAS.032: The photograph captures a scene similar to photograph SAS.031. In the upper part, walls with fired brick casing (?) pertaining to rooms WBN 122–124 can be noted. Based on the change of material and the fact that they are built higher than the step in wall WBN 119/122, which likely represented

the second floor level, the fired brick walls possibly belonged to the upper storey of the palace. To the right, a part of the baulk in trench T22 can be seen. In the background, the *Mahatta* quarter of Wad Ben Naga village is well visible.

SAS.033: The photograph captures the second season at the end of excavations. In the centre, a small, ca 0.3 m deep and 1.2 m wide buttress with fired brick casing can be noted, starting ca 1 m above what might have been the floor level or underfloor fill. The surrounding wall is made of mudbricks. Another parallel wall can be seen in the background. On the right, another protrusion or a perpendicular wall can be noted. The feature captured on the photograph cannot be identified with any buttress on Vercoutter's, Ali Hakem's, and Hinkel's plans. Judging from the state of preservation of the walls, the photograph nevertheless must come from the Palace of Amani-shakhete; an omission in their plans is thus most likely. Based on the shadows, the eastern or southern wall is captured.

SAS.034: The photograph captures the second season at the end of excavations. Judging from the comparison with photograph SAS.035, the south-western corner of room WBN 118a is captured. In the southern wall, a notable regular break in the wall is located approximately where room WBN 157 would follow. Similar break can be noted also on photographs SAS.031–032. Like the latter, it likely does not represent an opening in the wall, such as an entrance, but rather the negative of an architectural element quarried away, such as a sandstone threshold or fired brick casing, or a burial pit. Thirty courses of brickwork are preserved above the floor level. The floor seems relatively rough; two circular (?) features of unclear nature are located in the centre.

SAS.035: The photograph captures the second season at the end of excavations. In the foreground, wall WBN 118a/118b is captured. The wall has a thickness of a single brick and is laid irregularly. In the lower part, bricks were laid as inclined rowlocks in several courses, over which two to three roughly horizontal courses were laid, followed by bricks inclined in the other direction in the southern part and laid as rowlocks in the northern part, with an intermediary layer of horizontally laid bricks. The lower part of the wall may have been strengthened in this way, as inclined rows do not appear on the other side of the wall. To the right, brick debris from the surrounding walls can be noted, possibly left unexcavated similarly to the baulk in trench T57.²⁹ In the north-western corner of room WBN 118a, a curious brick construction can be noted, which possibly continued along the whole of the northern wall originally. It cannot be ascertained whether this construction is bound with the surrounding walls. The construction may have represented some kind of a support for an unknown architectural element (similar to the step in the wall on photographs SAS.031–032). It cannot be excluded that it should be linked to light wall WBN 118a/118b. Unlike the latter it could hardly be a secondary addition to the room, however, as its foundations are clearly reaching below what is presumably the floor level in the room. On the floor, the same circular (?) feature of an unclear nature as on photograph SAS.034 is visible.

25 Vercoutter 1962: pl. XVIIIb; Gerster 1964: 94–95.

26 Vercoutter 1962: fig. 8.

27 See chapter 3.8; *Preliminary Report* 12.

28 See chapter 3.6; *Preliminary Report* 9.

29 See chapter 3.13.

SAS.036: The photograph captures the second season at the end of excavations. In the foreground, room WBN 118a is captured, with one of the features on the floor visible on photograph SAS.034. The floor appears heavily disturbed as it is sloping mildly towards the south. Wall WBN 118a/118b is well visible on the photograph. In the lower part, it seems to constitute of courses of mudbricks laid on their broad sides. In the upper part, courses of bricks laid as rowlocks alternate with the courses of bricks laid as headers (and stretchers?); the bricks are laid with less care in this section of the wall and the courses are not horizontal. The wall clearly post-dates the main walls of the room and there is a strong possibility that it is in fact secondary. Along walls WBN 118a/119 and WBN 118/121, two baulks are left as a ramp for workmen. The one in room WBN 118b was examined in trench T57.³⁰ Possible fired bricks might be noted on the top of the wall and likely also on top of walls WBN 118b/128 and WBN 118b/129 further behind. On the very right, a regular cut in wall WBN 117/118a is worth attention with respect to similar cuts on photographs SAS.031–032 and SAS.034 which might indicate indirectly the position of openings. Farther to the east, rooms WBN 128–131 can be seen, with their poorly preserved walls. Section through the entrance to room WBN 128 can be noted. In the background, remains of the so-called Small Temple (WBN 400)³¹ are visible, as well as the excavation house.

SAS.037: The photograph captures the second season at the end of excavations. The room captured cannot be identified. Surrounding walls are made of mudbricks, and the room should thus be sought in the interior. Given the state of preservation, the photograph must come from the palace. The feature photographed is an irregular debris framed on two sides by perpendicular lines of brickwork (one or two courses maximum) or sandstone lintels. In the lower left corner, a layer of pebbles reminiscent of the material used as the fill elevating floors can be noted.

SAS.038: The photograph captures the second season at the end of excavations. The room cannot be identified with absolute certainty. Based on several indices, namely the height of the preserved brickwork, the break in the wall, the mutual position of walls, the location of fired brick casing, the direction of shadows, and the rows of bricks on the floor, the north-eastern corner of room WBN 156 is most likely captured on the photograph. On the very left, the eastern pillar in the room can thus be seen. Behind it, the position of fired brick casing is in concordance with present observation, as well as Hinkel's plan³² and photographs SAS.019–020.³³ The same photographs also capture the unusual rows of mudbricks (?) laid inclined on the floor in five columns. Notably, the columns of inclined bricks seem to continue under wall WBN 117/156. The unusual character of the wall is further strengthened by the way the bricks were bound and by its recessed mudbrick section on the right. This situation perhaps led Vercoutter to include an opening be-

tween rooms WBN 117 and WBN 156 (see fig. 2.3, *left*),³⁴ although he would have switched the eastern and western sides of the wall (the absence of the opening in the western side of the wall is demonstrated by the aerial photo of the excavated palace [fig. 1.3] and Hinkel's plans [fig. 2.3, *right*]).³⁵ The mudbrick section of the wall is, however, apparently well-bound with wall WBN 131/156, and thus it cannot represent a blocked entrance. It may be rather suggested that the section of the wall with badly bound fired brick casing marks a repair to the wall and the rows of bricks on the floor represent the repair material. This would also explain the poor state of preservation of the upper section of the wall.

SAS.039: The photograph captures a scene similar to photograph SAS.038.

SAS.040: The photograph captures the second season at the end of excavations. In the foreground, room WBN 121 is captured, with a considerable break in the wall caused by erosion in its south-eastern corner. In the lower right corner, the baulk excavated in trench T22³⁶ can be noted, with the original fill left unexcavated. Behind, over wall WBN 118b/121, another baulk can be noted, excavated in trench T57.³⁷ On the top of the wall, unclear objects are deposited, possibly fragments of sandstone blocks, rather than bricks. On the left, room WBN 127 can be clearly identified, with a pillar with fired brick casing protruding from the centre of its southern wall. Further to the east, rooms WBN 128–132 and WBN 144 can be seen. In the background, column drums deposited to the east of the palace and the excavation house are visible.

SAS.041: The photograph captures the second season of excavations. A section through the original fill of a room is captured. The room in question cannot be identified with certainty. Provided that the photograph comes from the end of excavations, the baulk in room WBN 121 examined in trench T22³⁸ comes into consideration, particularly given the height of the section. The section shows several consecutive layers, the character of which can be estimated based on comparison with baulks examined during recent reexcavations.³⁹ The uppermost part of the section is formed by two distinct accumulation horizons of white nodules of disintegrated lime plaster. Below, a thin layer of small fragments of fired bricks and/or sandstone chips is visible, overlying a solid layer of mudbrick debris. Under the debris, another layer of disintegrated lime plaster or *sāra* is visible. This sequence of layers is in concordance with the examined baulks. In the foreground, the brick debris forms a small ramp, which may have been used by workmen during excavations.

SAS.042: The photograph captures the second season at the end of excavations. Similar to photographs SAS.041 and SAS.044, a cross-section through the original fill of a room is

30 See chapter 3.13.

31 See *Wad Ben Naga Report II*.

32 Hinkel – Sievertsen 2002: pl. IX.75.

33 See also photograph D-DAI-Z-Arch-FWH-F-KB-sw-188-02.

34 See Vercoutter 1962: fig. 8.

35 Gerster 1964: 94–95; Hinkel – Sievertsen 2002: pl. IX.75; Hinkel Archive, D-DAI-Z-Arch-FWH-Z1232.

36 See chapter 3.6.

37 See chapter 3.13.

38 See chapter 3.6.

39 See chapters 3.6, 3.8, 3.13.

captured. The room in question is almost certainly room WBN 121 and the baulk is the one examined in trench T22,⁴⁰ given its corresponding shape, height, and composition. Several consecutive layers are visible, namely a deep layer of disintegrated lime plaster overlying a solid layer of brick debris and another layer of disintegrated plaster or *sāra*. The small baulk on the left was probably left on account of several complete bricks in the layer, which do not seem to form a regular structure, however.

SAS.043: The photograph captures the second season of excavations. A section through an unusual construction is captured, formed by ca 0.65 m of excavated fill of the floor made of *sāra* (?) and ca 0.7 m of mudbrick debris, which forms a base for a regular brick construction. It is not clear whether fired bricks or mudbricks were used for the latter. The construction employs bricks laid as headers and stretchers, as well as rowlocks. In this respect, the construction is similar to light wall WBN 118a/118b as well as the exterior wall in room WBN 143;⁴¹ however, it cannot be any of these walls. The most likely candidate is a construction in room WBN 160, visible on photographs SAS.060–062.⁴² All these photographs unfortunately show the other, western side of this construction, and only indirect evidence is thus available; namely the identical thickness of the excavated fill of the floor and only slightly smaller thickness of the brick debris and brickwork, which cannot be distinguished on photograph SAS.060. A similar position of shadows on both photographs would also speak for the possibility. Against such an identification speaks a slightly different “skyline” of the brickwork and the height of the main wall, which seems smaller than the main wall on photograph SAS.060. The former could be explained by the construction being relatively large and the photograph having been taken from a low angle. On a later aerial photograph (fig. 1.3),⁴³ the construction seems rather light, however.

SAS.044: The photograph captures the second season of excavations. A section similar to photographs SAS.041–042 is captured, although nothing indicates that it is the same section. Baulk in room WBN 121 thus comes into consideration given its height; however, it is equally possible that the photograph captures a section in another room which was later removed. A similar structure of the fill can be noted. In the uppermost part, a thick layer of accumulated disintegrated lime plaster is located, under which solid mudbrick debris from the surrounding walls overlies another, much thinner layer of disintegrated lime plaster, pebbles, and possibly *sāra*.

SAS.045: The photograph captures an adult burial embedded in a brick debris. Based on the volume of the brick debris, the photograph most likely comes from the palace;⁴⁴ the so-called Circular Building being the only possible, yet less likely alternative location. The position of the body cannot be determined; the head was to the east, the face to the north. The deceased

was wrapped in a leather shroud. No burial goods are visible. Burnt wood can be noted in the brick debris to the right of the body.

SAS.046: The photograph captures the second season at the end of excavations. The room captured cannot be identified. In the upper part, two perpendicular mudbrick walls can be noted; one with strengthened foundations. Three light walls constructed of loosely laid mudbricks and mudbrick fragments parallel to each other and connected by another similar wall at one end can be seen in the centre of the photo. These walls strongly remind of light walls excavated in trench T22,⁴⁵ in which case they served as a structural reinforcement of the fill elevating the floor. Similar function can be suggested for the walls on the photograph. Remains of the original fill with pebbles and small stones can be noted in one of the compartments.

SAS.047: The photograph captures a scene similar to photograph SAS.046. Another wall of the room is visible, with foundations reinforced in a similar way.

SAS.048: The photograph captures the second season at the end of excavations. The excavated palace is viewed from the west; a large part of the western exterior wall is visible (rooms WBN 104 to WBN 101). In room WBN 160, a light construction is visible.⁴⁶ The eastern wall of room WBN 158 seems to retain some of its whitewashed interior plasters. Sandstone column bases, drums, and capitals are redeposited in the foreground, together with some potsherds. In the very foreground, son-dage 1⁴⁷ with excavated remains of light buildings can be seen.

SAS.049: The photograph captures a scene similar to photograph SAS.048. A large part of the western exterior wall is visible, spanning rooms WBN 158 to WBN 101. On the right, the southern stone wall WBN 172 can be noted.

SAS.050: The photograph captures a scene similar to photographs SAS.048–049. A large part of the western exterior wall is visible, spanning rooms WBN 160 to WBN 101.

SAS.051: The photograph captures the second season at the end of excavations. Room WBN 103 and ramp WBN 164 leading to it can be seen, viewed from the west.

SAS.052: The photograph captures the second season in the course of excavations, likely in late December 1959, as room WBN 103 is excavated while rooms WBN 112–114 are not. Sections through the entrances to the latter rooms can be noted; the quality of the photograph does not permit to describe the character of the fill, unfortunately. Whitewashed plaster can be noted on the northern wall of room WBN 103 on the left.⁴⁸ Some burnt beams are visible by the north-western pillar in the room. In the foreground, ramp WBN 164 can be noted, in the debris of which at least one fragment of a column drum can be seen. A bowl (?) can be noted on the far left, on the top of the *kom*.

40 See chapter 3.6.

41 See photographs D-DAI-Z-Arch-FWH-F-KB-sw-075-03–04.

42 For the discussion, see photograph SAS.060.

43 Gerster 1964: 94–95.

44 See photograph SAS.018.

45 See chapter 3.6.

46 See photograph SAS.060.

47 See Vercoutter 1962: 275; Vrtal 2017: 69.

48 See also photographs SAS.054, SAS.127, and D-DAI-Z-Arch-FWH-F-KB-sw-075-07.

SAS.053: The photograph captures the second season at the end of excavations. Room WBN 103 is captured, viewed from the south-east. In the foreground, four pillars with fired-brick casing are clearly visible. Burnt wooden beams can be noted in the debris by the south-western pillar; traces of burning are visible also on the south-eastern pillar; possible fragments of burnt wood are situated nearby. In the background, sandstone column bases, drums, and capitals can be seen.

SAS.054: The photograph captures a scene similar to photograph SAS.053. In the foreground, the entrance to room WBN 112 can be seen. In the centre, room WBN 103 is visible, with four pillars and burnt wooden beams by the north-western and south-western pillars. Plaster can be noted on some of the pillars and on the northern wall of the room.

SAS.056: The photograph captures a scene similar to photographs SAS.048–050. A large part of the western exterior wall is visible, spanning rooms WBN 104 to WBN 101.

SAS.057: The photograph captures the second season at the end of excavations. Room WBN 158 is captured, viewed towards the west. On the left, the westernmost sandstone pillar in the room can be noted. Behind, the entrance to the room with its well-preserved sandstone jambs can be seen, as well as sandstone column drums redeposited in the exterior of the building. In the foreground, several fired bricks form either a secondary light wall or represent remains of the original fired brick casing of the floor.

SAS.058: The photograph captures a scene similar to photograph SAS.057. In addition to the latter photo, the middle one of three sandstone pillars in the room is captured, with an unusually positioned sandstone block abutting it. It cannot be demonstrated whether the vertical block is in its original position or had fallen during the disintegration of the building. The former seems likelier given the pedestal.

SAS.059: The photograph captures the second season at the end of excavations. A room in the south-western part of the palace is captured; rooms WBN 101–102 or WBN 159 come into consideration given the position of the rail embankment and sondage 1 in the background.⁴⁹ Two phases of construction were noted by Vercoutter⁵⁰ without providing further explanation. The “phases” most likely corresponded to the use of two distinctive mudbrick types as evidenced throughout the structure, changing at the floor level.⁵¹ The lower left corner indicates that the lower section of the wall was indeed built of mudbricks; brickwork structure can be noted also further to the west. On the floor level, bricks were destroyed either by erosion or quarried away – it can be suggested that the protruding course of bricks is built of fired bricks, possibly representing the original floor.

SAS.060: The photograph captures the second season at the end of excavations. Room WBN 160 is captured; viewed towards the east. On the left, room WBN 104 can be partly seen; on the right, rooms WBN 115–116 and WBN 158 are visible in

a similar way. In the eastern part of room WBN 160, a brick construction can be seen, which is visible also on some other photographs (SAS.061–062 and possibly SAS.043). The brickwork seems to start only at the height of ca 1.5 m above the limit of excavation in the room, although this may be on account of erosion or poor clearing of its structure below. The construction abuts the southern wall of the room; it does not seem bound with it, although it also cannot be excluded. Several additional important observations can be made: The exact position of the original floor level is unclear. Two hypothetical variants are possible: (1) The floor level is represented by the maximum level of excavation in the room; the overlying whitish fill with the depth of 0.65 m represents disintegrated lime plaster debris from the surrounding walls. The plaster debris was covered by mudbrick debris, also visible only under the brick construction in the room; the brick construction on top of the debris would thus necessarily be *secondary*; i.e. it was constructed only at the time that the surrounding walls were in an advanced state of decay. (2) The floor level was taken away during the excavations and its level is represented by the change of material under the brickwork, the marked erosion on the southern wall of the room, and the colour difference on the northern wall at approximately the same level, which might be indicative of the change of mudbrick type. In this case, the brick construction could be part of the original plan. It should also be noted that whitewashed mud plaster is well-preserved on both the southern and northern walls of the room. The plaster however starts only at a certain height, which is gradually greater towards the east. The linear nature of the lower limit of the plaster on the northern wall indicates that it might not be a coincidental phenomenon; on the contrary, it could mark a position and inclination of a communication with the upper storey, possibly in the form of a ramp or a staircase.⁵² On the southern wall, the same linear anomaly is marked by the state of preservation of mudbricks. It is equally notable that the light brick construction terminated at the height of this anomaly. This fact can, however, indicate either that the brick construction served as a support of the assumed communication with the upper storey or that specific erosive processes were at play at a certain point in time of the decay of the structure which destroyed the upper part of the wall and eroded the surface of the southern wall. Based on the evidence discussed, it seems most likely that the linear anomalies indeed mark the position of a communication with the upper storey, although its nature and manner of construction are enigmatic. The light wall was likely secondary, as it appears to be built on debris (?).⁵³

SAS.061: The photograph captures the second season at the end of excavations. A large part of the western exterior wall is captured, spanning rooms WBN 106 to WBN 160. In the foreground, sandstone column drums and blocks can be noted, redeposited in the exterior of the structure. A significant number of potsherds, predominantly from storage jars, can be

49 See also photograph D-DAI-Z-Arch-FWH-F-KB-sw-075-09.

50 Vercoutter 1962: pl. XXa.

51 See chapter 6.2.1.

52 See Vercoutter 1962: 280, fig. 8. Room U is erroneously labelled D on the plan.

53 Provided that the debris was not part of the original plan as a fill; the evidence for such use of material in the palace is lacking, however.

noted in the same area, including at least one large fragment of a cylindrical jar with short conical neck (form J1⁵⁴). Abutting the exterior wall, podium structure WBN 166 is visible. Only the outer walls of the structure are cleared enough to allow interpretation; its inner structure remains unclear. The outer walls consist of minimum three courses of fired bricks built in a regular fashion, thus excluding the possibility that the structure represented a short staircase or ramp providing access from the west. The outer face of the structure was plastered, and it thus most likely belonged to the same building phase as the palace itself. Behind, rooms WBN 104–WBN 106 can be seen, formed by two antechambers and a larger room. A light wall between antechambers of rooms WBN 105 and WBN 106 is well-visible. This wall was marked as secondary in Hinkel's plan⁵⁵ and as being built of mudbrick; neither can be confirmed from the photograph. On the right, room WBN 160 is captured; the brick structure in the room, best visible on photograph SAS.060, can be seen from a slightly different point of view. At the highest point of the excavated remains of the palace, fired brick (?) walls likely pertaining to the upper storey of the building can be seen.⁵⁶

SAS.062: The photograph captures the second season at the end of excavations. A large part of the western exterior wall is captured, spanning rooms WBN 109 to WBN 159. Other rooms further to the east can be identified. In the foreground, sandstone blocks, column drums, bases, and capitals, as well as potsherds can be seen, redeposited in the exterior of the building. Numerous features visible on photographs SAS.048–050 and SAS.056 can be observed on the photograph.

SAS.063: The photograph captures the second season at the end of excavations. In the foreground, a part of podium structure WBN 166 is captured, with rooms WBN 105 and WBN 106 behind. The brickwork of the podium is relatively well-visible, although the character of its internal structure is still unclear; the inclined brick on the right is notable, however. The light wall between antechambers to both rooms is well-visible, which was marked as secondary in Hinkel's plan.⁵⁷ The photograph does neither confirm nor rule out his observation. The wall also does not seem to be built of fired bricks, as designated by Hinkel.

SAS.064: The photograph captures the second season at the end of excavations. Room WBN 104 is captured, viewed towards the north-west. In the foreground, the rear part of the room is well-visible. The floor seems to be formed by white nodules of *sāra* or lime and pebbles. The entrance to the rear room has fired brick threshold or threshold base partly uncovered. On the right, a part of room WBN 105 is visible; the light wall between antechambers to rooms WBN 105 and WBN 106 marked as secondary in Hinkel's plan⁵⁸ can also be noted. In the background, sandstone blocks and column drums redeposited in the exterior of the building can be seen.

SAS.065: The photograph captures the second season at the end of excavations. Room WBN 105 is captured, viewed towards the north-west. A part of room WBN 106 can be seen on the right. In the foreground, the rear part of room WBN 105 is well-visible. The floor seems to be formed by white nodules of *sāra* or lime and pebbles. A trial pit was excavated in the north-western corner of the room in order to examine the foundations. A similar trial pit seems to be set in the second antechamber. The light wall between antechambers to rooms WBN 105 and WBN 106 marked as secondary in Hinkel's plan⁵⁹ can be noted. In the background, sandstone blocks and column drums redeposited in the exterior of the building can be seen. Further to the north-west, surface cleaning of wall WBN 171 had been carried out.

SAS.066: The photograph captures the second season at the end of excavations. The light wall between antechambers of rooms WBN 105 and WBN 106 is captured, viewed towards the north-west. The wall was marked as secondary in Hinkel's plan⁶⁰ and built of fired bricks; the photograph does not allow to confirm either.

SAS.067: The photograph captures the second season at the end of excavations. The north-eastern corner of the palace is captured, viewed towards the west. In the foreground, the debris from the exterior wall, excavated in trench T55,⁶¹ can be seen left *in situ*. The fortified corner of the exterior wall can be noted. Further to the west, podium structure WBN 167E abuts the northern exterior wall or possibly it is bound with it. The podium structure consists of outer light walls made of fired bricks, of which at least seven courses are preserved, laid in a regular fashion (i.e. forming a vertical wall). Nothing points to a former presence of an inclined surface such as a staircase or a ramp. Several light walls connect the northern outer wall of the podium structure and the exterior wall of the palace. They likely served as supports. Further to the west, ramp WBN 167W is visible, clearly separated from the latter structure.⁶² By the eastern exterior wall, rooms WBN 152–153 are well-visible. Walls forming other rooms further to the west can be identified. Notably, walls of room WBN 146 do not seem to be built of fired bricks as marked in Hinkel's plan,⁶³ at least in the upper part of the wall. This is in concord with Hinkel's note in one of his working variants of the plan.⁶⁴

SAS.068: The photograph captures the second season at the end of excavations. In the foreground, ramp WBN 167W can be seen, viewed from the north-east. The original surface of the ramp, preserving its ascent and leading to room WBN 120, is well-visible. On the very left, fired-brick-cased north-eastern corner of the ramp is relatively well-defined, leaving no doubt that WBN 167W and WBN 167E represent two separate structures. The ramp was clearly coated with lime plaster, well-preserved on most of its northern face. Room WBN 120, likely the

54 See chapter 5.1.6.1.

55 Hinkel – Sievertsen 2002: pl. IX.75.

56 See photographs SAS.031–032.

57 Hinkel – Sievertsen 2002: pl. IX.75.

58 Hinkel – Sievertsen 2002: pl. IX.75.

59 Hinkel – Sievertsen 2002: pl. IX.75.

60 Hinkel – Sievertsen 2002: pl. IX.75.

61 See chapter 3.11.

62 Cf. Hinkel – Sievertsen 2002: pl. IX.75.

63 Hinkel – Sievertsen 2002: pl. IX.75.

64 Hinkel Archive, D-DAI-Z-Arch-FWH-Z1227.

same one as captured on photograph SAS.015, has well-preserved southern wall, which indicates that no opening was situated at this level between rooms WBN 119 and WBN 120. Above the ramp, walls forming two elongated rooms WBN 107–108 can be noted.

SAS.069: The photograph captures the start of excavations at one of the *koms*. Given the ascent of the terrain that can be noted around the dig, it is possible that *komp* B is the one being excavated. Loose soil, likely with large white nodules, overlies fired brick debris.

SAS.070: The photograph captures the second season at the end of excavations. The photograph captures a mudbrick wall, likely in the palace, and a rough surface in front of it, which perhaps represents the floor of the room. The room cannot be identified.

SAS.072: The photograph captures the second season at the end of excavations. The scene captured is similar to photographs SAS.048–050 and SAS.056. The excavated palace is viewed from the west; a large part of the western exterior wall is visible (rooms WBN 160 to WBN 101). In room WBN 160, a light construction is visible.⁶⁵ The eastern wall of room WBN 158 seems to retain some of its white interior plasters. Sandstone column bases, drums, and capitals are redeposited in the foreground, together with some potsherds. In the very foreground, sondage 1⁶⁶ with excavated remains of light buildings and a vessel embedded in the floor can be seen.

SAS.073: The photograph captures the second season at the end of excavations. The scene captured is similar to photographs SAS.048–050, SAS.056, and SAS.072.

SAS.074: The photograph captures the second season in the course of excavations. The photograph captures two column capitals and one column drum. The capital in the foreground can be identified as the one belonging to capital type 3⁶⁷ with three Amun ram heads with sun-discs over the *nb/hb*-sign or an aegis. The identification of the second column capital is possible based on comparison with photograph SAS.079 and Fig. 9 in Vercoutter's report, situated to room C (WBN 156). The parts of columns rest on a layer of debris. Based on the other photographs, it is possible to conclude that this debris overlay regular brickwork forming the western pillar in room WBN 156. In the background, the northern and western walls of the room can thus be seen.

SAS.075: The photograph captures the second season in the course of excavations. A composite capital of capital type 2⁶⁸ is captured, fully unearthed. Based on information from Vercoutter's report,⁶⁹ the capital was found in room WBN 156, similar to capitals on photograph SAS.074.

SAS.076: The photograph captures a scene similar to SAS.075; the composite column capital is captured from a different angle.

SAS.077: The photograph captures the second season in the course of excavations. A composite column capital of capital type 2⁷⁰ is captured, most likely redeposited between the palace and the southern spoil heap, which is visible in the background. The capital was found roughly in this position by the Archaeological Expedition to Wad Ben Naga in 2009.⁷¹ Behind, other sandstone architectural elements can be seen, as well as at least one large fragment of a jar.

SAS.078: The photograph captures a scene similar to SAS.077; the composite column capital is captured from a different angle. Spoil heap (?) can be noted in the background.

SAS.079: The photograph captures a scene similar to SAS.074; viewed from a different angle. The two column capitals and a column drum rest on a debris overlying the regular brickwork of the western pillar in room WBN 156. To the left, the other pillar is likely captured and above it the eastern wall of the room and still unexcavated part of the *komp* with tools and shoes (?) lying on its surface. In the background, the southern spoil heap is in the process of formation.

SAS.080: The photograph captures object SNM 62/10/161.

SAS.081: The photograph captures objects SNM 62/10/23, SNM 62/9/107, and SNM 62/10/167. The photograph shows the objects in their archaeological context in room WBN 135.

SAS.082: The photograph captures object SNM 62/10/167b.

SAS.083: The photograph captures object SNM 62/10/167a (?) in its archaeological context in room WBN 135.

SAS.084: The photograph captures object SNM 62/10/167c (?) in its archaeological context in room WBN 135.

SAS.085: The photograph captures objects SNM 62/9/107 and SNM 62/10/23.

SAS.086: The photograph captures objects SNM 62/10/23.

SAS.087: The photograph captures a scene similar to photograph SAS.085.

SAS.088: The photograph captures objects SNM 62/9/107.

SAS.089: The photograph captures object SNM 62/9/107.

SAS.090: The photograph captures object SNM 62/10/23.

SAS.091: The photograph captures object SNM 62/10/23.

SAS.092: The photograph captures object SNM 62/10/23.

SAS.093: The photograph captures object SNM 62/9/107.

SAS.094: The photograph captures object SNM 62/10/23.

SAS.095: The photograph captures object SNM 62/10/23.

SAS.096: The photograph captures object SNM 62/9/107.

SAS.097: The photograph captures object SNM 62/9/107.

SAS.098: The photograph captures object SNM 62/10/23.

SAS.099: The photograph captures object SNM 62/10/23.

SAS.100: The photograph is identical to photograph SAS.097.

SAS.101: The photograph captures object SNM 62/10/162.

⁶⁵ See photograph SAS.060.

⁶⁶ See Vercoutter 1962: 275; Vrtal 2017: 69.

⁶⁷ See chapter 6.2.6.

⁶⁸ See chapter 6.2.6.

⁶⁹ See Vercoutter 1962: fig. 10.

⁷⁰ See chapter 6.2.6.

⁷¹ See chapter 3.1. See also photographs D-DAI-Z-Arch-FWH-F-KB-sw-084-17–19.

SAS.102: The photograph captures object SNM 62/10/162.

SAS.103: The photograph captures object SNM 62/9/101.

SAS.104: The photograph captures a scene similar to photograph SAS.103.

SAS.105: The photograph captures object SNM 11949 in its archaeological context (?) during the first season in March 1959. The presence of lime plaster to the right might indicate that the statue was uncovered close to a brick moulding on the exterior wall.

SAS.106: The photograph captures a scene similar to photograph SAS.105.

SAS.107: The photograph captures object SNM 62/10/160.

SAS.108: The photograph captures object SNM 62/10/160 in its archaeological context (?) in room WBN 156 in December 1959.

SAS.109: The photograph captures object SNM 62/10/149.

SAS.110: The photograph captures object SNM 62/10/149.

SAS.111: The photograph captures object SNM 62/9/40.

SAS.112: The photograph captures object SNM 62/9/42.

SAS.114: The photograph captures object SNM 62/9/41.

SAS.115: The photograph captures object SNM 62/10/138.

SAS.116: The photograph captures object SNM 62/10/79 (?).

SAS.117: The photograph captures object SNM 62/10/148.

SAS.118: The photograph captures object SNM 62/9/55.

SAS.119: The photograph captures object SNM 62/9/37b.

SAS.120: The photograph captures object SNM 62/9/69.

SAS.121: The photograph captures object SNM 62/9/34.

SAS.122: The photograph captures the second season of excavations. The room on the photograph can be identified as WBN 104 based on the artefacts captured in their archaeological context. The photograph was likely taken on 11 January 1960. In the foreground, one of the two easternmost sections of the room is captured, viewed from the east. In the debris of sand, soil, pebbles, and mudbrick fragments (?), a number of artefacts is buried, which can be identified as the following objects (from the foreground towards the back): SNM 62/9/43, SNM 62/9/66, SNM 62/10/4, SNM 62/10/5, SNM 62/9/77, an unidentifiable ceramic (?) bowl, SNM 62/9/68, SNM 62/10/170, and one of strainers SNM 62/9/25, SNM 62/9/26, and SNM 62/10/49. Traces of burnt wood and ash can be noted over ivory tusks SNM 62/9/68.

SAS.123: The photograph captures object SNM 62/9/43.

SAS.124: The photograph captures object SNM 62/9/66.

SAS.125: The photograph captures a scene similar to photograph SAS.122.

SAS.126: The photograph captures a scene similar to photographs SAS.122 and SAS.125.

SAS.127: The photograph captures a scene similar to photographs SAS.053–054. It shows four pillars and the northern wall of room WBN 103. Remains of plaster can be noted on the wall. Burnt beams of palmwood can be seen between both pairs of pillars and by the wall, resting on debris. A large stor-

age jar, likely embedded in the debris and reused as an oven, can be seen on the left.

SAS.128: The photograph captures a scene similar to photographs SAS.053–054 and SAS.127.

SAS.129: The photograph captures the second season of excavations. One of rooms in the northern part of the palace is captured, viewed towards the north. The room can be most likely identified as WBN 126.⁷² In the foreground, burnt beams of wood can be noted. In the room, at least six (?) storage jars of the same type (ovoid jar with short conical neck, form J2⁷³) can be noted, deposited upside down. The jars and the room must be the same ones as on photographs SAS.148, D-DAI-Z-Arch-FWH-F-KB-sw-084-16, and Shinnie exp. neg. 1419.⁷⁴ Likely a neck of another jar of the same form is deposited on the wall; another complete jar is situated behind, together with numerous fragments of necks and/or bowls and a tall conical vessel with a flat base (?). In the background, a workman can be noted in the area of the northern spoil heap. To the left, several complete jars are situated, likely modern *zirs* used by workmen. On the horizon, the railway station (*Mahatta*) can be seen.

SAS.130: The photograph captures a scene similar to photographs SAS.053–054 and SAS.127–128. On the top, rooms WBN 158 and WBN 159 can be noted, whose walls retain remains of plaster coating.

SAS.131: The photograph captures object SNM 62/9/72.

SAS.132: The photograph captures object SNM 62/9/72.

SAS.133: The photograph captures object SNM 62/9/72.

SAS.134: The photograph captures object SNM 62/9/29.

SAS.135: The photograph captures object SNM 62/9/106.

SAS.136: The photograph captures the second season of excavations. The room captured can be identified based on the objects as room WBN 108 (?),⁷⁵ viewed from the north or west. Fifteen spherical blackware jars with narrowing neck (form J10⁷⁶) are deposited upside down in loose soil. Most of the jars can be identified as follows:

(*left row, from the front*): (1) SNM 62/10/141 or SNM 62/10/156, (2) SNM 62/10/150, (3) SNM 62/10/155, (4) SNM 62/10/154, (5) SNM 62/10/151, (6) SNM 62/10/141 or SNM 62/10/156, (7–9) unidentifiable

(*right row, from the front*): (10) SNM 62/10/152, (11) SNM 62/10/142, (12) SNM 62/10/140, (13–15) unidentifiable

SAS.137: The photograph captures object SNM 62/10/143.

SAS.138: The photograph captures object SNM 62/10/123.

SAS.139: The photograph captures object SNM 62/9/98.

SAS.140: The photograph captures object SNM 62/10/21.

SAS.141: The photograph captures objects SNM 62/10/49 (*right*) and SNM 62/9/26 (*left*).

72 See the preserved shape of the northern wall and fig. 1.3.

73 See chapter 5.1.6.1.

74 See also Shinnie 1967: pl. 9.

75 See chapter 2.2.3.5.

76 See chapter 5.1.6.6.

SAS.142: The photograph captures object SNM 62/10/38.

SAS.143: The photograph captures object SNM 62/10/35.

SAS.144: The photograph captures object SNM 62/10/35.

SAS.145: The photograph captures object SNM 62/9/39.

SAS.146: The photograph captures object SNM 62/10/37.

SAS.147: The photograph captures object SNM 62/9/97.

SAS.148: The photograph captures the second season of excavations. The minimum of 38 storage ovoid jars with short conical neck (form J2⁷⁷) are captured, deposited upside down in one of the rooms. No other vessel forms seem to be present. Some of the jars are covered with patches of white substance, likely disintegrated plaster. The room can be identified with WBN 126 based on comparison with photographs SAS.129, D-DAI-Z-Arch-FWH-F-KB-sw-084-16, and Shinnie exp. neg. 1419.⁷⁸ Remains of some of the jars are also visible in the room on a later aerial photograph (fig. 1.3).⁷⁹

SAS.149: The photograph captures the second season of excavations. In the foreground a mastaba-like structure is set against a partition wall, with three large vessels embedded into it. The middle vessel is likely an ovoid jar with short conical neck (form J2⁸⁰) and the bottom broken off. The absence of ash in the vessels is striking and unless it was removed during excavations, it may indicate other function than cooking. In the background, one (or two?) semi-circular structures can be seen along the wall(s). The rooms captured on the photo cannot be directly identified; rooms WBN 149 and WBN 150 seem the most likely candidates based on the layout of the walls.

SAS.150: The photograph captures the second season of excavations. Four large storage jars are captured, embedded in the soil and likely serving as ovens. One vessel can be identified based on the wide mouth and the small ledge rim as a vat of form B4b⁸¹ with the bottom broken off. The room can be tentatively identified as WBN 111 based on a comparison with photographs SAS.022 and Shinnie exp. neg. 1423,⁸² on which the same vessels seem to be captured.

SAS.151: The photograph captures the second season of excavations. In the foreground, a large body fragment of a storage jar (cylindrical form J1⁸³) is embedded in the ground; another smaller vessel is embedded in this jar. Behind, still another jar is embedded in the ground. In the background, offering stand SNM 62/10/167a (?) can be seen, in the same position as on photograph SAS.083. The room captured can be identified based on the latter evidence as room WBN 135. Photographs SAS.022 and D-DAI-Z-Arch-FWH-F-KB-sw-075-10 also likely show the position of the vessels in the room.

SAS.152: The photograph captures the second season of excavations. Three vessels are depicted in the foreground: likely a large cylindrical jar with short conical neck (form J1⁸⁴) embedded in the ground, into which a smaller jar is inserted. By the wall, a vat (form B4b⁸⁵) is deposited. On the left, a large rectangular block of sandstone with a plastered side can be seen. Lime or whitewashed mud plaster is partly preserved on the wall. The plaster is heavily blackened by fire, which can be the result of both conflagration and cooking activities. The room or place by the exterior wall captured on the photograph cannot be identified.

SAS.153: The photograph captures the second season of excavations. The room captured can be identified as WBN 134, viewed towards west. In the foreground, two storage jars with their tops broken off at shoulders and one completely shattered jar (?) are situated, embedded in the ground, possibly as ovens. Another such jar can be seen in the north-western corner of the room and still another is situated by the entrance.⁸⁶ In the background, the northernmost pair of sandstone columns in room WBN 154 can be noted, and the entrance to room WBN 157, with a floor ascending towards the west and perhaps representing the surface of a ramp.

SAS.154: The photograph captures the second season of excavations. Three storage jars embedded in the ground and reused as ovens can be seen. The room on the photograph cannot be identified, the preserved height of the wall nevertheless indicates that it comes from the Palace of Amanishakhete.

SAS.155: The photograph captures the first season of excavations in February 1959. Object SNM 11957 can be seen in the foreground, as excavated by the archaeologists during clearing of the exterior wall of the palace. The surrounding debris seems to constitute of soil from dissolved mudbricks and disintegrated lime plaster.

SAS.163: The photograph captures the second season at the end of excavations. The eastern exterior wall of the palace is captured from the area of the Small Temple, spanning the area between room WBN 139 and room WBN 153; a scene similar to photographs SAS.011–012. Remains of walls of other rooms in the eastern part of the palace can be discerned. In the foreground, column drums are deposited to the east of the palace. Still to the east, mid-way between the palace and the Small Temple, fragments of a sandstone statue of Sebiuameker (?) (object SNM 62/10/162)⁸⁷ are deposited.

SAS.164: The photograph captures a scene similar to photograph SAS.163. Rooms WBN 139 to WBN 143 are captured. On the very left, near the southern spoil heap, sandstone column drums and capitals can be noted, as well as a large pile of bricks.

SAS.165: The photograph (cropped) captures the first season in the course of excavations. In the background on the left, the

⁷⁷ See chapter 5.1.6.1.

⁷⁸ Shinnie 1967: pl. 9.

⁷⁹ Gerster 1964: 94–95.

⁸⁰ See chapter 5.1.6.1.

⁸¹ See chapter 5.1.2.5. The vessel is perhaps the same one that can be seen redeposited by the southern spoil heap on photograph D-DAI-Z-Arch-FWH-F-KB-sw-084-17.

⁸² Shinnie 1967: pl. 7.

⁸³ See chapter 5.1.6.1.

⁸⁴ See chapter 5.1.6.1.

⁸⁵ See chapter 5.1.2.5.

⁸⁶ It is indistinct on account of the shadow, see photograph D-DAI-Z-Arch-FWH-F-KB-sw-075-10.

⁸⁷ Vercoutter 1962: 275–277; cf. *Preliminary Report 1*: pls. 7–8.

north-eastern corner of *kom* B prior to excavation can be noted. The surface appears to consist of sand, disintegrated plaster, and brick fragments.

SAS.166: The photograph (cropped) captures a scene similar to photograph SAS.165. In the background on the right, the south-eastern corner of *kom* B is captured. A possible sandstone block can be seen on the horizon. Notably, neither column drums nor fragments of the statue of Sebiuwerker can be seen deposited in the area between the palace and the Small Temple, confirming Vercoutter's statement that object SNM 62/10/162 was found only during clearing of the perimeter of the palace.⁸⁸

SAS.174: The photograph (cropped) captures the first season of excavations at the turn of 1958 and 1959. In the foreground, there is the fully cleared Eastern Temple. In the background to the left, the *kom* with the remains of the Small Temple and three tumuli (?) can be seen. To the right, *kom* B with the remains of the palace can be noted. On the latter, in the south-east, a few small mounds may also indicate the presence of at least three tumuli. The northern side of the *kom* is covered with fired brick fragments, while the summit and the eastern part of the *kom* seem to consist of sand or white nodules. On the very summit, remains of walls can be seen.

SAS.194: The photograph captures the first season in the course of excavations. In the background, above the wall of the Circular Building, *kom* B is captured from the south, before excavation. A possible sandstone block, visible on photograph SAS.166, can be noted on the surface.

SAS.197: The photograph may capture object WB 59/60 51, provided that the latter is not identical with object SNM 62/9/42.⁸⁹

SAS.198: The photograph captures object SNM 62/9/40.

SAS.199: The photograph may capture object WB 59/60 51, provided that the latter is not identical with object SNM 62/9/42.⁹⁰

SAS.206: The photograph captures object SNM 62/10/79.

SAS.207: The photograph captures object SNM 62/10/170 (?).

SAS.208: The photograph captures object SNM 62/10/57.

SAS.209: The photograph captures object SNM 62/10/17.

SAS.210: The photograph captures object SNM 62/10/26.

SAS.211: The photograph possibly captures one of ovoid jars with short conical neck (form J2⁹¹) visible on photographs SAS.129 and SAS.148.

SAS.212: The photograph possibly captures object SNM 62/10/166. It shows an ovoid jar with short conical neck (form

J2⁹²); the neck is missing. No vessel of this shape is captured on photographs of other structures excavated in 1958–1959; the palace is thus a reasonable possibility for its localisation.

SAS.213: The photograph captures parts of two cylindrical jars with short conical neck (form J1⁹³), embedded in the ground and reused as ovens. A fragment of a deep ledge-rimmed bowl (form B2⁹⁴) is situated on top of the right jar. No vessels of this shape were captured on photographs of structures excavated in 1958–1959; the palace is thus a reasonable possibility for their localisation. A fired brick wall with plaster preserved indicates that the vessels were situated in the exterior.

SAS.215: The photograph likely captures the second season of excavations. Parts of two jars are captured, embedded in the ground and likely serving as ovens. The vessels seem to be set in a floor-like layer. In the background, high mudbrick walls can be noted, which situate the find to an unidentifiable room in the palace.

SAS.216: The photograph captures the second season of excavations. The room can be identified as room WBN 135. A vessel embedded in the ground and serving as an oven is situated in the centre; object SNM 62/10/23 lies nearby.

SAS.222: The photograph captures the second season of excavations. The area captured cannot be identified from the photograph. It is nevertheless taken from the same spot as Hinkel's photograph D-DAI-Z-Arch-FWH-F-KB-sw-075-07, which allowed its localisation. In the centre, a pit for a stretched burial was cut into mudbrick wall WBN 128/148. The head was oriented to the south, the deceased was laid on the right side. Room WBN 145 on the top left remains largely unexcavated on the photograph. Two quernstones (?) or a quernstone and a conical weight are deposited on wall WBN 145/148.

2.1.1.3 Other contemporary accounts

In addition to the photographic documentation by the archaeological mission, other archival sources can be consulted that captured the spatial context of the structure in the course of archaeological works or in the following years.

2.1.1.3.1 Friedrich W. Hinkel

Hinkel visited the site on numerous occasions between 1960 and 2000. Series of photographs capturing the palace, preserved in his archive kept by the Deutsches Archäologisches Institut,⁹⁵ come from his visits to the site on 2 March 1960⁹⁶ and 20 January 1961,⁹⁷ in October

⁸⁸ Vercoutter 1962: 275–277.

⁸⁹ See Appendix, cat. no. 29. There are discrepancies in the dimensions between the find entry for libation basin WB 59/60 51 and the accessioned libation basin SNM 62/9/42. The libation basin on photograph cannot be identified with any of the libation basins accessioned in the Sudan National Museum. Neither the basin on the photograph nor basin SNM 62/9/42 have pierced walls between the compartments, as stated in the find entry for basin WB 59/60 51.

⁹⁰ See photograph SAS.197.

⁹¹ See chapter 5.1.6.1.

⁹² See chapter 5.1.6.1.

⁹³ See chapter 5.1.6.1.

⁹⁴ See chapter 5.1.2.3.

⁹⁵ The present author is grateful to Martina Düntzer, Deutsches Archäologisches Institut, for the possibility to access the files.

⁹⁶ Photographs D-DAI-Z-Arch-FWH-F-KB-sw-075-03–15.

⁹⁷ Photographs D-DAI-Z-Arch-FWH-F-KB-sw-084-13–19.



SAS.001



SAS.002



SAS.003



SAS.004



SAS.005



SAS.006



SAS.007



SAS.008



SAS.010



SAS.011



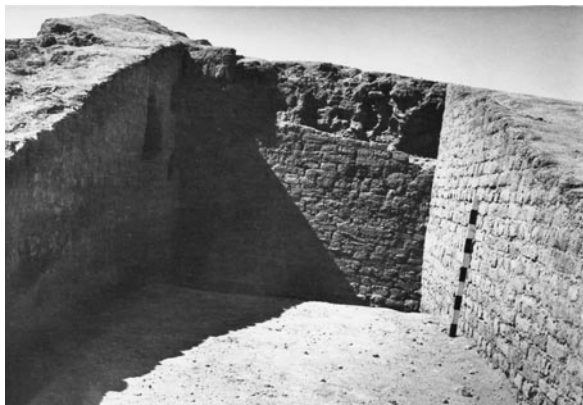
SAS.012



SAS.013



SAS.014



SAS.015



SAS.016



SAS.017



SAS.018



SAS.019



SAS.020



SAS.021



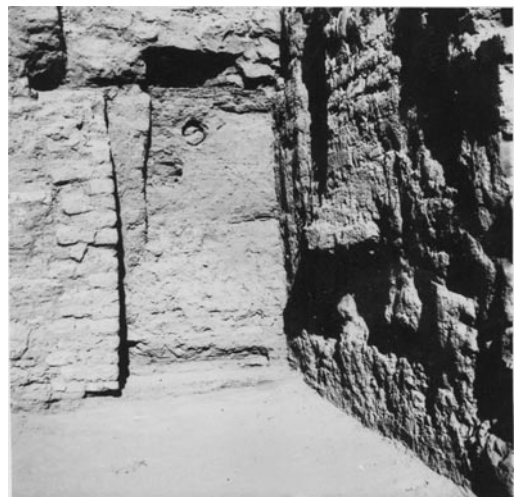
SAS.022



SAS.023



SAS.024



SAS.025



SAS.026



SAS.027



SAS.028



SAS.029



SAS.030



SAS.031



SAS.032



SAS.033



SAS.034



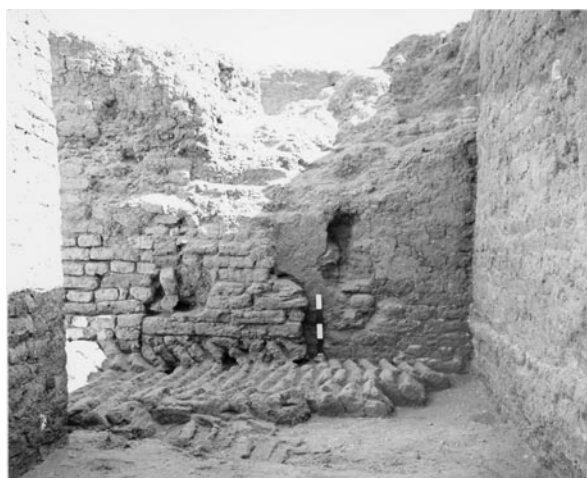
SAS.035



SAS.036



SAS.037



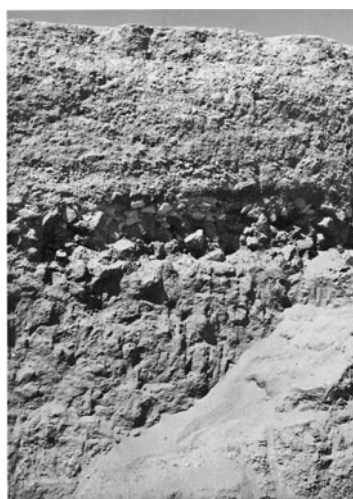
SAS.038



SAS.039



SAS.040



SAS.041



SAS.042



SAS.043



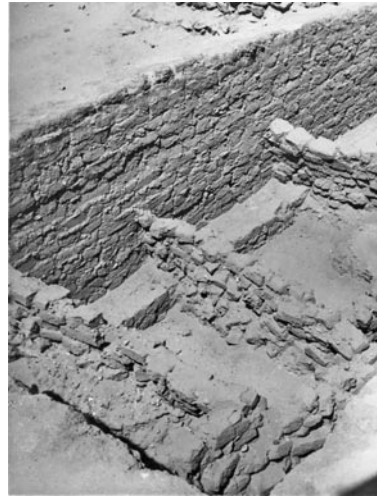
SAS.044



SAS.045



SAS.046



SAS.047



SAS.048



SAS.049



SAS.050



SAS.051



SAS.052



SAS.053



SAS.054



SAS.056



SAS.057



SAS.058



SAS.059



SAS.060



SAS.061



SAS.062



SAS.063



SAS.064



SAS.065



SAS.066



SAS.067



SAS.068



SAS.069



SAS.070



SAS.072



SAS.073



SAS.074



SAS.075



SAS.076



SAS.077



SAS.078



SAS.079



SAS.080



SAS.081



SAS.082



SAS.083



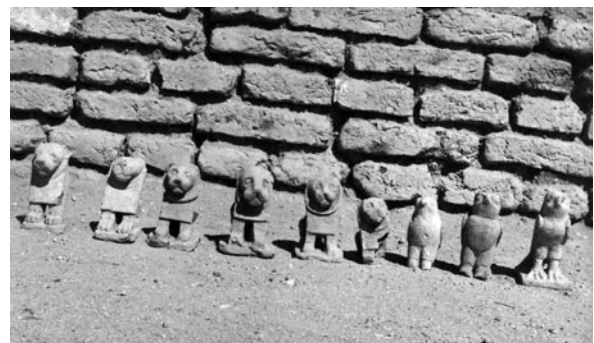
SAS.084



SAS.085



SAS.086



SAS.087



SAS.088



SAS.089



SAS.090



SAS.091



SAS.092



SAS.093



SAS.094



SAS.095



SAS.096



SAS.097, SAS.100



SAS.098



SAS.099



SAS.101



SAS.102



SAS.103



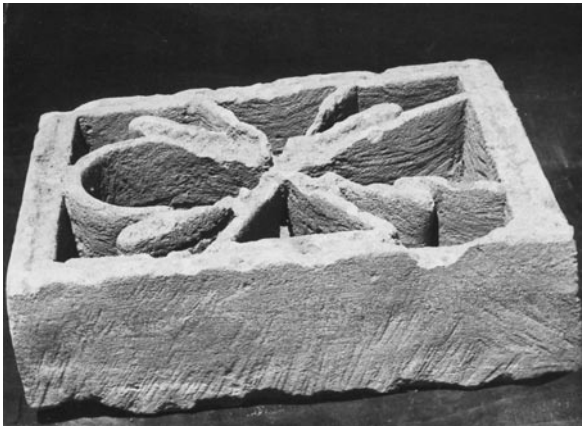
SAS.104



SAS.105



SAS.106



SAS.107



SAS.108



SAS.109



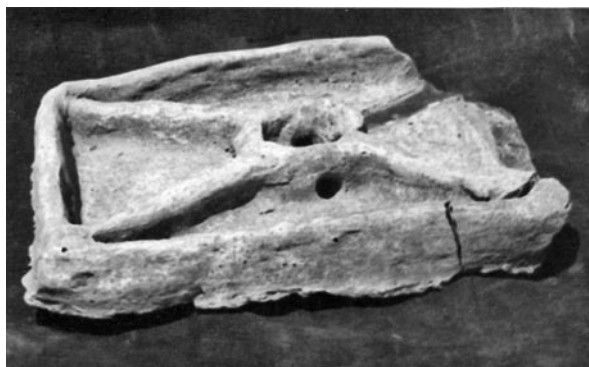
SAS.110



SAS.111



SAS.112



SAS.114



SAS.115



SAS.116



SAS.117



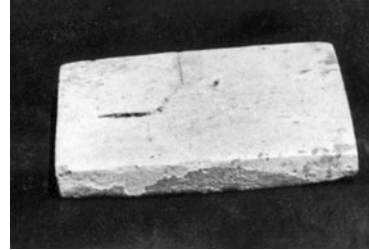
SAS.118



SAS.119



SAS.120



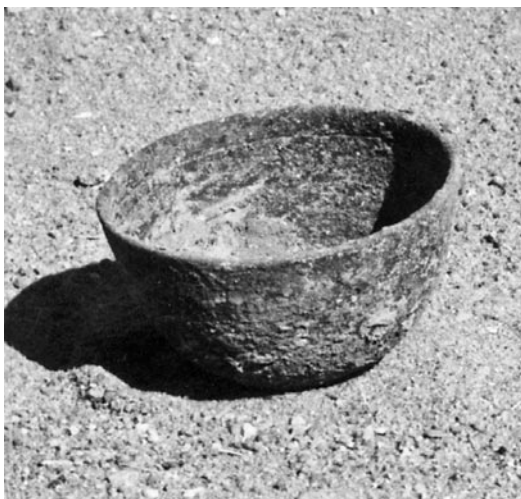
SAS.121



SAS.122



SAS.123



SAS.124



SAS.125



SAS.126



SAS.127



SAS.128



SAS.129



SAS.130



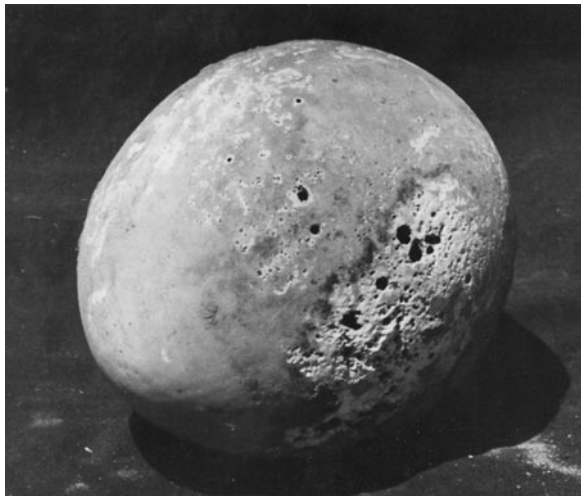
SAS.131



SAS.132



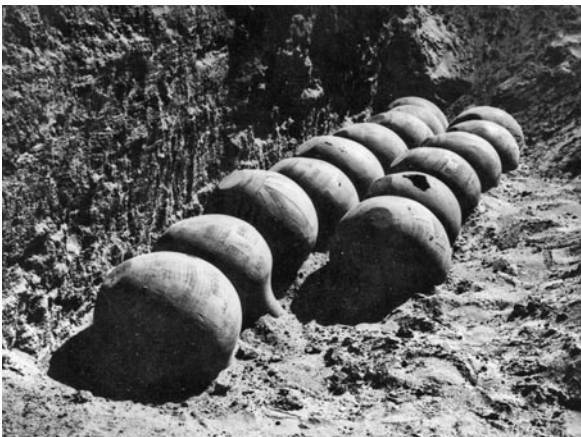
SAS.133



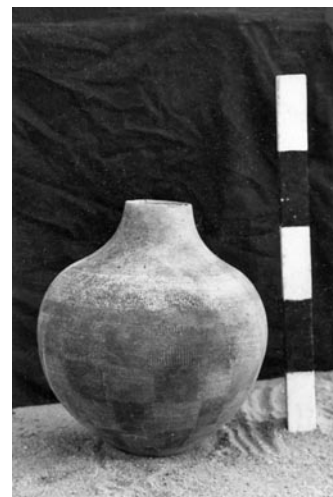
SAS.134



SAS.135



SAS.136



SAS.137



SAS.138



SAS.139



SAS.140



SAS.141



SAS.142



SAS.143



SAS.144



SAS.145



SAS.146



SAS.147



SAS.148



SAS.149



SAS.150



SAS.151



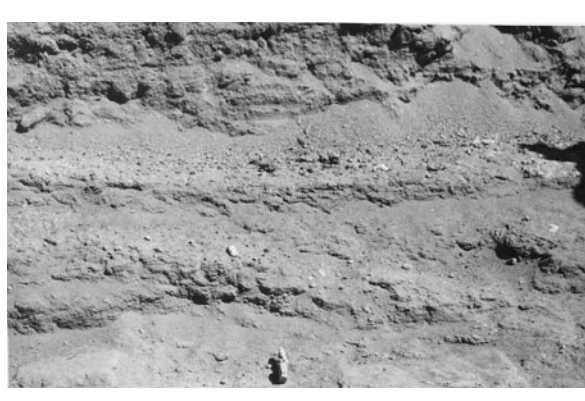
SAS.152



SAS.153



SAS.154



SAS.155



SAS.163



SAS.164



SAS.165



SAS.166



SAS.174



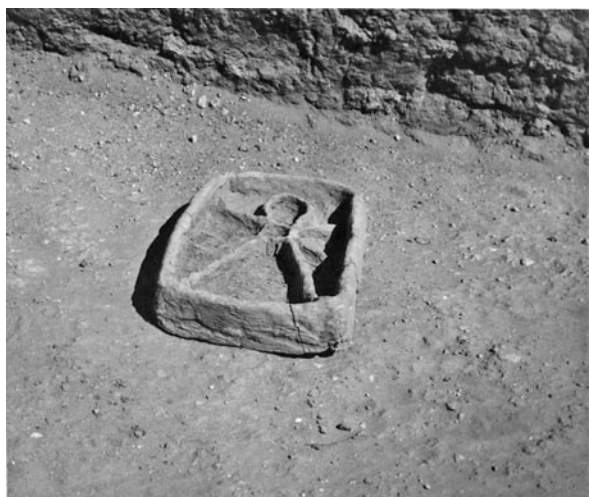
SAS.194



SAS.197



SAS.198



SAS.199



SAS.206



SAS.207



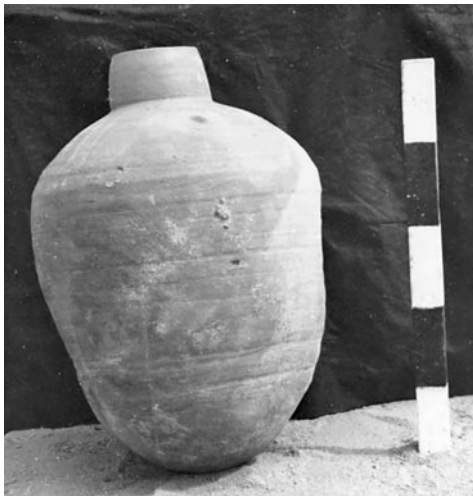
SAS.208



SAS.209



SAS.210



SAS.211



SAS.212



SAS.213



SAS.215



SAS.216



SAS.222

Images by the expedition of the Sudan Antiquities Service. Courtesy of the National Corporation for Antiquities and Museums and Section française de la direction des antiquités du Soudan.

1962,⁹⁸ on 17 December 1966,⁹⁹ in 1968,¹⁰⁰ on 3 April 1969,¹⁰¹ 28 December 1972,¹⁰² 9–14 January 1977,¹⁰³ 14 December 1981,¹⁰⁴ 22 June 1984,¹⁰⁵ and 11 May 1985,¹⁰⁶ in 1986,¹⁰⁷ 1987,¹⁰⁸ on 19 January 1996,¹⁰⁹ 12 March 1999,¹¹⁰ and 27 October 2000.¹¹¹ Four photographs from these series were later published by Hinkel.¹¹² The photographs taken during the 1960s are perhaps the most valuable, as they capture the structure in the course (series from 2 March 1960) or shortly after the excavations, and some of the finds either *in situ* or deposited around the structure's perimeter. Among the latter, there are also some finds that are not recorded in other sources.

D-DAI-Z-Arch-FWH-F-KB-sw-075-03: The inner side of the eastern exterior wall in room WBN 143 can be seen, with courses of brick laid interchangeably as headers, stretchers, and rowlocks. In the background, dig house and camp are situated in the area to the east of the Small Temple.

D-DAI-Z-Arch-FWH-F-KB-sw-075-04: Rooms WBN 128–130 can be seen in the foreground, with the entrance to room WBN 128 uncleared, similar to photographs SAS.012, SAS.025–026, and SAS.036. A handstone is situated on the remains of a wall north of the entrance to room WBN 129. Rooms WBN 142–143 and ramp WBN 161–162 are situated above. Further to the east can be seen deposited stone architectural elements, and the Small Temple, the dig house, and a camp.

D-DAI-Z-Arch-FWH-F-KB-sw-075-05: Wall WBN 118a/118b is captured, seen from the west. In the southern part, the wall appears to be constructed over a sloping gravel bed. The lowermost courses of brickwork are thus not horizontal. The wall employs bricks laid as headers and rowlocks. On the top left, baulk excavated in trench T57¹¹³ can be seen. On the top right, there is a rectangular cut in wall WBN 117/118; there are no indications that it would be a deliberate opening, however.

D-DAI-Z-Arch-FWH-F-KB-sw-075-06: The northern wall and sandstone bases in room WBN 158 are captured on the photograph. On the left, there are (fired) bricks on the floor, perhaps representing its original surface. The northern and eastern walls are coated with whitewashed plaster. Above, rooms WBN 160 and WBN 104–105 can be seen. On the northern wall of the former, whitewashed plaster is preserved.

D-DAI-Z-Arch-FWH-F-KB-sw-075-07: In the foreground, Thabit Hassan Thabit is captured in a conversation with a female archaeologist (likely Ursula Hintze or Gisela Buschendorff-Otto) in room WBN 103. Behind them is Fritz Hintze, leaning against the north-eastern pillar in the room, and two male archaeologists (likely Karl-Heinz Otto and Karl-Heinz Priese).¹¹⁴ Another person stands in the background, on wall WBN 156/157. In four spots, burnt wood can be seen on the floor.

D-DAI-Z-Arch-FWH-F-KB-sw-075-08: Nearly complete length of the southern exterior wall is captured on the photograph, as well as rooms of the southern part of the palace. In the foreground on the right, the southern spoil heap, a column of bricks, and sandstone architectural elements can be seen. Two archaeologists and two *raises* (?) can be noted in the background, on wall WBN 117/118 and WBN 140/142, respectively.

D-DAI-Z-Arch-FWH-F-KB-sw-075-09: The south-western corner of the structure and nearly complete length of the western exterior wall are captured on the photograph. In the foreground, wall WBN 172 can be seen. On the left, sandstone architectural elements are deposited just behind the distinct limit of excavations. Thabit Hassan Thabit, Fritz Hintze, and two other persons can be noted in room WBN 103, another person walks in the background. Whitewashed plasters in rooms WBN 158 and WBN 160 can be seen. In the westernmost part of room WBN 106, unclear structural features seem preserved.

D-DAI-Z-Arch-FWH-F-KB-sw-075-10: Rooms WBN 110 and WBN 154 can be seen in the foreground, the southern entrance is situated on the right. In the series of rooms WBN 134–136, there are several vessel emplacements, recorded also on photographs SAS.022, SAS.151, and SAS.153. A burnt wooden threshold can be noted in the entrance to room WBN 134, partly embedded in pockets in door jambs. In the background, the Small Temple, the dig house, and the camp can be seen.

D-DAI-Z-Arch-FWH-F-KB-sw-075-11: Room WBN 157 is captured in the centre of the photograph, with several cuts, possibly from burial pits, in its eastern wall. Remains of whitewashed plaster can be noted on it, particularly in its southern part. The slanting distribution of plaster recalls the situation in room WBN 160 as captured on photograph SAS.060. Besides, there seem to be also a slanting blackish spot, possibly from burnt wood deposited in a slope or a conflagration of a wooden construction. On the left, eastern wall of room WBN 113 is situated. Above room WBN 157, limits of rooms WBN 117, WBN 131, and WBN 156 are well-visible. On the top left, one of the *raises* (?) can be noted.

98 Photographs D-DAI-Z-Arch-FWH-F-KB-sw-110-47–59.

99 Photographs D-DAI-Z-Arch-FWH-F-MF-sw-R279-12, D-DAI-Z-Arch-FWH-F-MF-sw-R377-06–12.

100 Photograph D-DAI-Z-Arch-FWH-F-MF-sw-R378-01.

101 Photographs D-DAI-Z-Arch-FWH-F-DIA-03462–03463.

102 Photographs D-DAI-Z-Arch-FWH-F-KB-sw-188-1–3.

103 Photographs D-DAI-Z-Arch-FWH-F-KB-sw-211-29–69, D-DAI-Z-Arch-FWH-F-KB-sw-213-69.

104 Photographs D-DAI-Z-Arch-FWH-F-KB-sw-340-20–30.

105 Photographs D-DAI-Z-Arch-FWH-F-KB-sw-506-27–33.

106 Photographs D-DAI-Z-Arch-FWH-F-DIA-330-41, D-DAI-Z-Arch-FWH-F-KB-sw-552-53–55, D-DAI-Z-Arch-FWH-F-KB-sw-558-51.

107 Photograph D-DAI-Z-Arch-FWH-F-DIA-342-5.

108 Photograph D-DAI-Z-Arch-FWH-F-KB-sw-646-78.

109 Photographs D-DAI-Z-Arch-FWH-F-DIA-401-32, D-DAI-Z-Arch-FWH-F-DIA-402-4, D-DAI-Z-Arch-FWH-F-KB-sw-706-24A–32A, D-DAI-Z-Arch-FWH-F-KB-sw-707-18.

110 Photographs D-DAI-Z-Arch-FWH-F-DIA-10882–10883, D-DAI-Z-Arch-FWH-F-KB-sw-808-33–37.

111 D-DAI-Z-Arch-FWH-F-KB-sw-815-24–32.

112 Hinkel – Sievertsen 2002: pls. X.66–69.

113 See chapter 3.13.

114 See Hintze *et al.* 1993: 7.

D-DAI-Z-Arch-FWH-F-KB-sw-075-12: The southern entrance to room WBN 154 with the western wing of ramp WBN 163 is captured on the photograph. Presumably only the lowermost course of bricks, laid as inclined rowlocks, is preserved from the ramp.

D-DAI-Z-Arch-FWH-F-KB-sw-075-13: A section of the southern exterior wall is captured, a few meters to the west of the southern entrance.¹¹⁵ A significant part of the wall face was apparently quarried away above the better-preserved, protruding foundation courses. In the lowermost one, bricks were laid as rowlocks.

D-DAI-Z-Arch-FWH-F-KB-sw-075-15: The southern exterior wall between rooms WBN 101 and WBN 136 and the rooms to the north of it are captured from the area of the Circular Building. The southern spoil heap can be seen in the foreground. Rooms WBN 101–102 are lacking the entrances erroneously marked in Vercoutter's plan.¹¹⁶ By the northern limit of room WBN 157, no remains of a ramp or other construction can be seen, a dent in the northern wall of the room is notable, however. Whitewashed plaster can be seen on the eastern wall of the room.

D-DAI-Z-Arch-FWH-F-KB-sw-084-13: Room WBN 127 is captured in the centre, being photographed by a male archaeologist (Fritz Hintze?). The eastern part of the room is left unexcavated, as it apparently served to access the trench. The lintel over the entrance to room WBN 126, which was captured also by Shinnie from the other side¹¹⁷ is well-preserved and a male archaeologist walks over it. The northern wall of room WBN 121 and the baulk excavated in trench T22¹¹⁸ can be seen on the left. Fired brick (?) walls of the second storey (?) can be noted behind the photographing archaeologist. Western walls of rooms WBN 123–124 can also be seen, as can sandstone architectural fragments deposited to the north of the structure in the background.

D-DAI-Z-Arch-FWH-F-KB-sw-084-14: The photograph captures rooms WBN 128–129 and WBN 127 in the foreground. The fired brick section of the western wall of room WBN 128 well-visible on the photograph was examined in a secondary position in trench T57.¹¹⁹ In the centre, rooms WBN 118 (*to the left of the ghafir?*) and WBN 121 (*to the right*) are also clearly visible, as is the baulk excavated in trench T22.¹²⁰

D-DAI-Z-Arch-FWH-F-KB-sw-084-15: The photograph captures burial pit with an interment in an extended position cutting wall WBN 128/148. It was taken from the same spot as photograph SAS.222. Unlike on the latter photograph, the burial is already heavily disturbed. Parts of rooms WBN 148 and WBN 147 are well-visible on the right, poorly preserved room WBN 147 in the centre, and partly unexcavated (?) room WBN 144 on the left. The northern spoil heap can be seen in the background.

D-DAI-Z-Arch-FWH-F-KB-sw-084-16: The photograph captures room WBN 126 with the bulk find of minimum 37 ovoid

jars with conical neck (form J2) on the right and minimum 12 fragments of presumably cylindrical neckless jars (sub-form J9a)¹²¹ on the left. The latter can be identified based on Shinnie's photograph of the room.¹²²

D-DAI-Z-Arch-FWH-F-KB-sw-084-17: The photograph captures the southern exterior wall between rooms WBN 110 and WBN 136 and rooms further to the north. On the western wall of room WBN 157, remains of whitewashed plaster can be noted. In the foreground, stone architectural elements are deposited between the structure and the southern spoil heap, including column capitals of types 1–3.¹²³ Besides the capitals, there are also numerous potsherds, most likely grouped according to their origin from a single broken vessel. Some pottery forms can be clearly discerned: In the foreground on the right, a ledge-rimmed deep cylindrical vat (form B4b)¹²⁴ is deposited upside down, with its base missing. It may be the same vessel that was captured on photograph SAS.150, reused as an oven. Behind it, fragments of wheelmade spherical, ovoid, and cylindrical jars can be noted, some of fairly small proportions.

D-DAI-Z-Arch-FWH-F-KB-sw-084-18: The photograph¹²⁵ captures the southern exterior wall between rooms WBN 101 and WBN 136 and rooms further to the north. On the western wall of room WBN 157, remains of whitewashed plaster can be noted. No remains of a ramp or other construction can be noted in the northern part of the room; the dent in the northern wall noted on photograph D-DAI-Z-Arch-FWH-F-KB-sw-075-15 is not paralleled on its left side. In the foreground, stone architectural elements, namely column drums, are deposited, as well as several groups of potsherds and complete or nearly complete vessels. Among the latter, a piece of a ledge-rimmed open conical vessel, possibly with a ring base (sub-form M8a)¹²⁶ can be noted next to two small-sized cylindrical jars or deep vats (*on the left*), a complete deep vat with plain rim (sub-form B4c)¹²⁷ is situated on the right, in front of the person in the foreground. Body of a spherical jar or the shoulder of an ovoid or cylindrical jar lies next to it; body of another is situated nearby.

D-DAI-Z-Arch-FWH-F-KB-sw-084-19: The photograph captures the southern exterior wall, the entrance to room WBN 154 can be seen on the left. In the foreground, a column capital of capital type 2 ("lily"-capital)¹²⁸ is deposited, an inspector or an archaeologist (?) is resting on it.

D-DAI-Z-Arch-FWH-F-KB-sw-110-47: The photograph captures the structure from the east, the Small Temple can be seen in the foreground.

D-DAI-Z-Arch-FWH-F-KB-sw-110-51: The photograph captures the entrance to room WBN 154 and the surrounding rooms. The bases of the northern walls of the room are washed away. Base of an ovoid jar (?) can be noted on the exterior wall to the left of the entrance.

115 See photograph D-DAI-Z-Arch-FWH-F-KB-sw-075-08.

116 Vercoutter 1962: fig. 8.

117 See photograph Shinnie exp. neg. 1419; Shinnie 1967: pl. 9.

118 See chapter 3.6.

119 See chapter 3.13.

120 See chapter 3.6.

121 See chapters 5.1.6.1 and 5.1.6.5.

122 See photograph Shinnie exp. neg. 1419; Shinnie 1967: pl. 9.

123 See chapter 6.2.6.

124 See chapter 5.1.2.5.

125 Hinkel – Sievertsen 2002: pl X.66.

126 See chapter 5.1.8.5.

127 See chapter 5.1.2.5, SNM 62/10/164, Appendix, cat. no. 260.

128 See chapter 6.2.6.

D-DAI-Z-Arch-FWH-F-KB-sw-110-53: The photograph¹²⁹ captures the entrance to room WBN 142 and the well-preserved southern torus moulding on the façade of the eastern exterior wall. Two pillars abutting the wall and supporting the platform atop ramp WBN 161–162 can be noted on the right.

D-DAI-Z-Arch-FWH-F-KB-sw-110-55: The photograph captures two sandstone gargoyles and a collection of ceramic and stone artefacts. Among the latter, one can note (starting from the left) a neck fragment and a piece of a bifid handle from a Mediterranean amphora of type Dressel 2–4 (sub-form F3b),¹³⁰ three lower parts and one campaniform capital part of sandstone offering table stands with remains of plaster,¹³¹ one possibly identical with a piece captured on photograph SAS.084, a piece of a ceramic stemmed offering stand (form M4),¹³² several fragments of spherical jars, two additional foots of stemmed offering stands and a large piece of a tall tubular stand (?) (sub-form M1b).¹³³ The attribution of the finds to the spatial context of the palace is uncertain.¹³⁴

D-DAI-Z-Arch-FWH-F-KB-sw-110-57: The photograph captures the same collection of ceramic and stone artefacts as photographs D-DAI-Z-Arch-FWH-F-KB-sw-110-55 and D-DAI-Z-Arch-FWH-F-KB-sw-110-59.

D-DAI-Z-Arch-FWH-F-KB-sw-110-59: The photograph captures the same collection of ceramic and stone artefacts as photographs D-DAI-Z-Arch-FWH-F-KB-sw-110-55 and D-DAI-Z-Arch-FWH-F-KB-sw-110-57. On the gargoyle in the form of a lion, a possible handstone can be noted. Beside the Mediterranean amphora of type Dressel 2–4 (sub-form F3b), neck fragment of an Aswan amphora of type Gempeler K 703 (form F1) is deposited.¹³⁵ To the left of the lower parts of sandstone offering table stands and one possible campaniform capital part, other presumably stone artefacts are deposited. All are of conical shape, although they differ in height. They may represent stone weights, similar to weights SNM 62/10/133 and SNM 62/10/137.¹³⁶ The shorter artefacts recall a hemispherical weight (or an *ex voto*?) found in the so-called Typhonium (WBN 200).¹³⁷ Further to the back, remains of a small spherical jar can be seen, as well as a group of lids (form A1/2),¹³⁸ parts of stemmed offering stands (form M4),¹³⁹ a tall tubular stand (sub-form M1b),¹⁴⁰ and an ovoid jar (likely form J2).¹⁴¹

D-DAI-Z-Arch-FWH-F-MF-sw-R279-12: The photograph captures the southern pillar supporting podium atop ramp WBN 161–162.

D-DAI-Z-Arch-FWH-F-MF-sw-R377-6: The photograph captures the eastern exterior wall between rooms WBN 142 and

WBN 152 and the western part of ramp WBN 161–162. Sandstone architectural elements, namely column drums and two lintel or column base blocks, are deposited in the foreground.

D-DAI-Z-Arch-FWH-F-MF-sw-R377-7: The photograph captures the southern exterior wall in the area of the entrance to room WBN 154. In the foreground, sandstone column drums are deposited, as well as several potsherds. Most of the pottery finds captured on photo D-DAI-Z-Arch-FWH-F-KB-sw-084-18 are missing.

D-DAI-Z-Arch-FWH-F-MF-sw-R377-8: The photograph captures stone and fired brick architectural elements deposited to the west of the structure. Two nearly complete campaniform capitals can be noted in the centre.

D-DAI-Z-Arch-FWH-F-MF-sw-R377-11: The photograph captures the western exterior wall of the palace between the north-western corner and room WBN 158. The original surface of ramp WBN 167W is well visible. In the foreground, sandstone architectural elements deposited to the west of the structure can be seen on the right, the length of stone wall WBN 171 is situated in the centre.

D-DAI-Z-Arch-FWH-F-MF-sw-R377-12: The photograph captures ramp WBN 167W. Lime plaster coating of its northern wall is well-visible, as is its original surface formed by three courses of fired bricks laid in a slanting disposition. No remains of a ramp or any other construction can be seen in room WBN 120.

D-DAI-Z-Arch-FWH-F-MF-sw-R378-01: The photograph captures the western part of ramp WBN 161–162 and the eastern exterior wall in the area of the entrance to room WBN 142.

D-DAI-Z-Arch-FWH-F-DIA-03462: The photograph captures the eastern exterior wall between rooms WBN 141 and WBN 153 and the western part of ramp WBN 161–162. Sandstone architectural elements, namely column drums and two lintel or column base blocks, are deposited in the foreground.

D-DAI-Z-Arch-FWH-F-DIA-03463: The photograph captures the southern exterior wall in the area of the entrance to room WBN 154. In the foreground, sandstone column drums are deposited.

D-DAI-Z-Arch-FWH-F-KB-sw-188-01: The photograph captures the eastern exterior wall and ramp WBN 161–162.

D-DAI-Z-Arch-FWH-F-KB-sw-188-02: The photograph¹⁴² captures the southern entrance and rooms WBN 154–156.

D-DAI-Z-Arch-FWH-F-KB-sw-188-03: The photograph captures column capitals of capital types 1–2¹⁴³ deposited to the south of the southern exterior wall that can be seen on the very top.

D-DAI-Z-Arch-FWH-F-KB-sw-211-29: The photograph captures the southern pillar supporting the podium atop ramp WBN 161–162.

D-DAI-Z-Arch-FWH-F-KB-sw-211-31: The photograph captures sandstone architectural elements deposited to the east of

129 Hinkel – Sievertsen 2002: pl. X.68.

130 See chapter 5.1.5.

131 See chapter 4.8.2.

132 See chapter 5.1.8.4.

133 See chapter 5.1.8.1.

134 See chapter 2.2.3.2.

135 See chapter 5.1.5.

136 See chapter 4.6.5.

137 Onderka – Vrtal *et al.* 2014: 163, cat. no. 63.

138 See chapter 5.1.1.

139 See chapter 5.1.8.4.

140 See chapter 5.1.8.1.

141 See chapter 5.1.6.1.

142 Hinkel – Sievertsen 2002: pl. X.67.

143 See chapter 6.2.6.

the structure, including two fragments of campaniform capitals and one lintel or base in one group, and possible knee parts of legs of a striding figure in the other.

D-DAI-Z-Arch-FWH-F-KB-sw-211-33: The photograph captures the southern exterior wall of the structure, viewed towards the west.

D-DAI-Z-Arch-FWH-F-KB-sw-211-35: The photograph¹⁴⁴ captures double torus moulding brick with lime plaster coating.

D-DAI-Z-Arch-FWH-F-KB-sw-211-59: The photograph captures column bases in room WBN 158, viewed from the west.

D-DAI-Z-Arch-FWH-F-KB-sw-211-61: The photograph captures the entrance to room WBN 158 and ramp WBN 165.

D-DAI-Z-Arch-FWH-F-KB-sw-211-63: The photograph captures the western exterior wall between rooms WBN 159 and WBN 102 and ramp WBN 164. Sandstone architectural elements, including campaniform capitals, are deposited in the foreground. Outlets had been installed in the exterior wall to drain rainwater out of the interior.

D-DAI-Z-Arch-FWH-F-KB-sw-211-65: The photograph captures brickwork.

D-DAI-Z-Arch-FWH-F-KB-sw-211-67: The photograph captures room WBN 154 and entrances to rooms WBN 111 and WBN 157.

D-DAI-Z-Arch-FWH-F-KB-sw-211-69: The photograph captures entrance to room WBN 154 and rooms WBN 110–111 and WBN 157.

D-DAI-Z-Arch-FWH-F-KB-sw-213-69: The photograph captures the structure from the east.

D-DAI-Z-Arch-FWH-F-KB-sw-340-20: The photograph captures fragments of sandstone and fired brick architectural elements, including a double torus moulding brick coated with plaster, deposited to the east of the structure.

D-DAI-Z-Arch-FWH-F-KB-sw-340-21: The photograph captures fragments of sandstone architectural elements, including a campaniform column capital and two lintel or column base blocks, deposited to the east of the structure.

D-DAI-Z-Arch-FWH-F-KB-sw-340-22: The photograph captures the eastern exterior wall in the area of the entrances to rooms WBN 142–143 and the western part of ramp WBN 161–162.

D-DAI-Z-Arch-FWH-F-KB-sw-340-23: The photograph captures the western part of ramp WBN 161–162 and room WBN 143.

D-DAI-Z-Arch-FWH-F-KB-sw-340-24: The photograph captures the western wing of the decorative frame in the southern façade of the exterior wall. The uppermost double torus moulding brick was clearly an addition. Room WBN 110 can be noted above.

D-DAI-Z-Arch-FWH-F-KB-sw-340-25: The photograph captures the western wing of the decorative frame in the southern façade of the exterior wall, seen from above. The uppermost double torus moulding brick was clearly an addition.

D-DAI-Z-Arch-FWH-F-KB-sw-340-26: The photograph captures column capitals of capital types 1–2¹⁴⁵ deposited to the south of the southern exterior wall.

D-DAI-Z-Arch-FWH-F-KB-sw-340-27: The photograph captures column capitals of capital types 1 and 3¹⁴⁶ and potsherds deposited to the south of the southern exterior wall that can be seen on the top.

D-DAI-Z-Arch-FWH-F-KB-sw-340-28: The photograph captures column capital of capital type 3¹⁴⁷ and potsherds deposited to the south of the southern exterior wall.

D-DAI-Z-Arch-FWH-F-KB-sw-340-29: The photograph captures column capitals of capital types 1 and 3¹⁴⁸ to the south of the southern exterior wall. Another block seems to preserve part of a torus ring.

D-DAI-Z-Arch-FWH-F-KB-sw-340-30: The photograph captures rooms WBN 154–155 and WBN 157.

D-DAI-Z-Arch-FWH-F-KB-sw-506-27: The photograph captures ramp WBN 167W.

D-DAI-Z-Arch-FWH-F-KB-sw-506-29: The photograph captures the entrance to room WBN 158 and room WBN 160 on the left.

D-DAI-Z-Arch-FWH-F-KB-sw-506-31: The photograph captures room WBN 103.

D-DAI-Z-Arch-FWH-F-KB-sw-506-33: The photograph captures sandstone architectural elements deposited to the west of the structure, including two nearly complete campaniform column capitals.

D-DAI-Z-Arch-FWH-F-DIA-330-41: The photograph captures the structure from the east, from the area of the so-called Small Temple.

D-DAI-Z-Arch-FWH-F-KB-sw-552-53: The photograph captures the structure from the east, from the area of the so-called Small Temple.

D-DAI-Z-Arch-FWH-F-KB-sw-552-55: The photograph captures the structure from the east, from the area of the so-called Small Temple.

D-DAI-Z-Arch-FWH-F-DIA-342-05: The photograph captures rooms WBN 154–156 and the series of rooms to the east.

D-DAI-Z-Arch-FWH-F-KB-sw-558-51: The photograph captures column capitals of capital types 1–2¹⁴⁹ deposited to the south of the southern exterior wall.

D-DAI-Z-Arch-FWH-F-KB-sw-646-78: The photograph captures the entrance to room WBN 158.

D-DAI-Z-Arch-FWH-F-DIA-401-32: The photograph captures the structure from the south.

D-DAI-Z-Arch-FWH-F-DIA-402-04: The photograph captures the structure from the east.

144 Hinkel – Sieversten 2002: pl. X.69.

145 See chapter 6.2.6.

146 See chapter 6.2.6.

147 See chapter 6.2.6.

148 See chapter 6.2.6.

149 See chapter 6.2.6.

D-DAI-Z-Arch-FWH-F-KB-sw-706-24A: The photograph captures rooms WBN 129 and WBN 143.

D-DAI-Z-Arch-FWH-F-KB-sw-706-25A: The photograph captures the southern wing of the decorative frame on the façade of the eastern exterior wall.

D-DAI-Z-Arch-FWH-F-KB-sw-706-26A: The photograph captures entrances to rooms WBN 142–143.

D-DAI-Z-Arch-FWH-F-KB-sw-706-27A: The photograph captures sandstone architectural elements deposited to the east of the structure.

D-DAI-Z-Arch-FWH-F-KB-sw-706-28A: The photograph likely captures the eastern part of the southern exterior wall of the structure.

D-DAI-Z-Arch-FWH-F-KB-sw-706-29A: The photograph captures rooms WBN 154–156 and series of rooms to the east.

D-DAI-Z-Arch-FWH-F-KB-sw-706-30A: The photograph captures rooms WBN 154–156 and series of rooms to the east and west.

D-DAI-Z-Arch-FWH-F-KB-sw-706-31A: The photograph captures rooms WBN 154–156 and series of rooms to the east and west.

D-DAI-Z-Arch-FWH-F-KB-sw-706-32A: The photograph captures the structure from the west.

D-DAI-Z-Arch-FWH-F-KB-sw-707-18: The photograph captures the structure from the north-east.

D-DAI-Z-Arch-FWH-F-DIA-10882: The photograph captures the structure from the east, aerial view.

D-DAI-Z-Arch-FWH-F-DIA-10883: The photograph captures the structure from the east, aerial view.

D-DAI-Z-Arch-FWH-F-KB-sw-808-33: The photograph captures the structure from the east.

D-DAI-Z-Arch-FWH-F-KB-sw-808-34: The photograph captures the south-east corner of the structure.

D-DAI-Z-Arch-FWH-F-KB-sw-808-35: The photograph captures the structure from the east.

D-DAI-Z-Arch-FWH-F-KB-sw-808-36: The photograph captures sandstone architectural elements deposited to the east of the structure.

D-DAI-Z-Arch-FWH-F-KB-sw-808-37: The photograph captures the southern wing of the decorative frame on the façade of the eastern exterior wall.

D-DAI-Z-Arch-FWH-F-KB-sw-815-24: The photograph captures the structure from the east, from the area of the so-called Small Temple.

D-DAI-Z-Arch-FWH-F-KB-sw-815-25: The photograph captures the structure from the east, from the area of the so-called Small Temple.

D-DAI-Z-Arch-FWH-F-KB-sw-815-26: The photograph captures entrances to rooms WBN 142–143 and the western part of ramp WBN 161–162.

D-DAI-Z-Arch-FWH-F-KB-sw-815-27: The photograph captures sandstone architectural elements deposited to the east of the structure and entrances to rooms WBN 142–143 and the western part of ramp WBN 161–162.

D-DAI-Z-Arch-FWH-F-KB-sw-815-28: The photograph captures entrances to rooms WBN 142–143 and the western part of ramp WBN 161–162.

D-DAI-Z-Arch-FWH-F-KB-sw-815-29: The photograph captures the southern wing of the decorative frame on the façade of the eastern exterior wall.

D-DAI-Z-Arch-FWH-F-KB-sw-815-30: The photograph captures the southern exterior wall.

D-DAI-Z-Arch-FWH-F-KB-sw-815-31: The photograph captures rooms WBN 154–156.

D-DAI-Z-Arch-FWH-F-KB-sw-815-32: The photograph captures the western exterior wall, stone wall WBN 172, and sandstone architectural elements deposited to the west of the structure.

2.1.1.3.2 Peter L. Shinnie

Shinnie visited the site on several occasions. In his personal archive, kept by the University of Calgary Archives and Special Collections,¹⁵⁰ three series of photographs of the site are preserved. The photographs were taken on 18(–19) February 1960,¹⁵¹ in April 1964,¹⁵² and in 1968–1969.¹⁵³ In 1967, two photographs taken during the Sudanese excavations in February 1960 were published (in a cropped format) in Shinnie's book *Meroe: A civilization of the Sudan*.¹⁵⁴

Shinnie exp. neg. 1419: The photograph captures “store-room in the palace” with “pots”.¹⁵⁵ Based on the position of the shadow, the preserved height of the walls, and the presence of a door to the west, the room can be identified with room WBN 126.¹⁵⁶ At least 30 ovoid jars with short conical neck (form J2¹⁵⁷) are captured on the photograph, deposited upside down in an elongated room. Along the other wall of the room, at least 15 wheelmade cylindrical neckless jars (sub-form J9b¹⁵⁸) were deposited, this time standing on their bases. It is likely that jar SNM 62/10/165 comes from this group. The entrance to the neighbouring room WBN 127 is preserved in its full height. The

150 The present author is grateful to Curtis Frederick, University of Calgary, for the possibility to access the files.

151 University of Calgary Archives and Special Collections, Peter L. Shinnie fonds, 2013.029 20.12, exposure book negatives 1419–1423. For the date of the visit to the site, see exposure book, University of Calgary Archives and Special Collections, 2013.029 12.02; and Shinnie's transcription of his diary, University of Calgary Archives and Special Collections, 2013.029 1.10.

152 University of Calgary Archives and Special Collections, Peter L. Shinnie fonds, 2013.029 13.02, slide negatives 1851–1853.

153 University of Calgary Archives and Special Collections, Peter L. Shinnie fonds, 2013.029 13.05, slide negatives 3086–3088.

154 Shinnie 1967: pls. 7, 9.

155 Shinnie 1967: pl. 9.

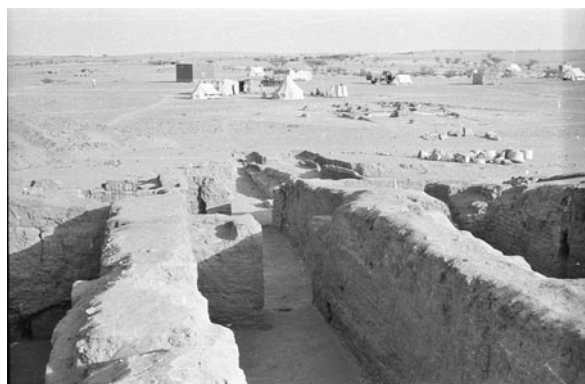
156 See photographs SAS.129, SAS.148, D-DAI-Z-Arch-FWH-F-KB-sw-084-13, and D-DAI-Z-Arch-FWH-F-KB-sw-084-16.

157 See chapter 5.1.6.1.

158 See chapter 5.1.6.5.



D-DAI-Z-Arch-FWH-F-KB-sw-075-03



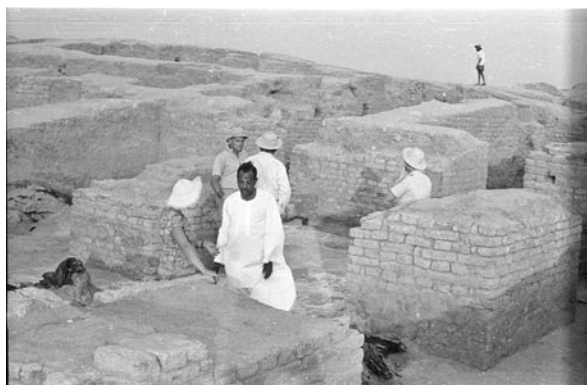
D-DAI-Z-Arch-FWH-F-KB-sw-075-04



D-DAI-Z-Arch-FWH-F-KB-sw-075-05



D-DAI-Z-Arch-FWH-F-KB-sw-075-06



D-DAI-Z-Arch-FWH-F-KB-sw-075-07



D-DAI-Z-Arch-FWH-F-KB-sw-075-08



D-DAI-Z-Arch-FWH-F-KB-sw-075-09



D-DAI-Z-Arch-FWH-F-KB-sw-075-10



D-DAI-Z-Arch-FWH-F-KB-sw-075-11



D-DAI-Z-Arch-FWH-F-KB-sw-075-12



D-DAI-Z-Arch-FWH-F-KB-sw-075-13



D-DAI-Z-Arch-FWH-F-KB-sw-075-15



D-DAI-Z-Arch-FWH-F-KB-sw-084-13



D-DAI-Z-Arch-FWH-F-KB-sw-084-14



D-DAI-Z-Arch-FWH-F-KB-sw-084-15



D-DAI-Z-Arch-FWH-F-KB-sw-084-16



D-DAI-Z-Arch-FWH-F-KB-sw-084-17



D-DAI-Z-Arch-FWH-F-KB-sw-084-18



D-DAI-Z-Arch-FWH-F-KB-sw-084-19



D-DAI-Z-Arch-FWH-F-KB-sw-110-47



D-DAI-Z-Arch-FWH-F-KB-sw-110-51



D-DAI-Z-Arch-FWH-F-KB-sw-110-53



D-DAI-Z-Arch-FWH-F-KB-sw-110-55



D-DAI-Z-Arch-FWH-F-KB-sw-110-57



D-DAI-Z-Arch-FWH-F-KB-sw-110-59



D-DAI-Z-Arch-FWH-F-MF-sw-R-279-12



D-DAI-Z-Arch-FWH-F-MF-sw-R377-06



D-DAI-Z-Arch-FWH-F-MF-sw-R377-07



D-DAI-Z-Arch-FWH-F-MF-sw-R377-08



D-DAI-Z-Arch-FWH-F-MF-sw-R377-11

Vážení čtenáři, právě jste dočetli ukázkou z knihy ***Wad Ben Naga Report V..***
Pokud se Vám ukázka líbila, na našem webu si můžete zakoupit celou knihu.